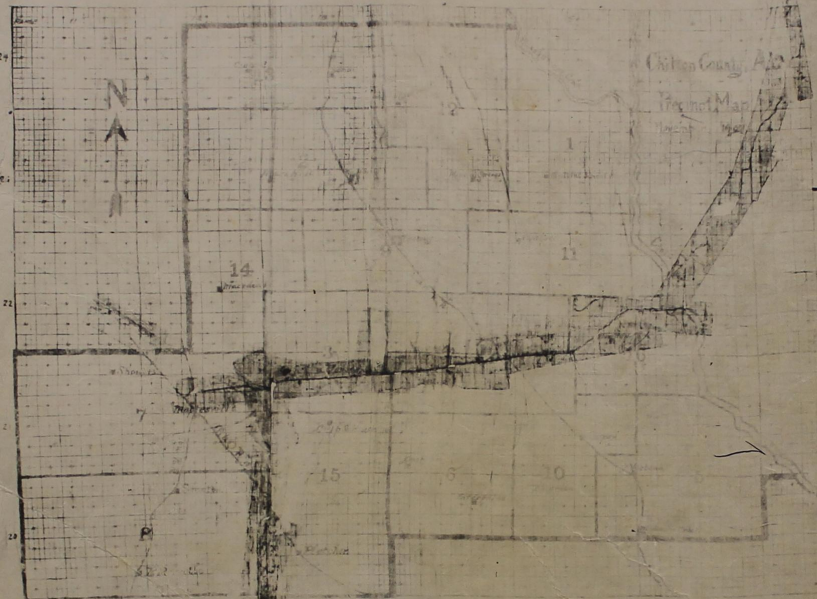


MAP BOOK

CHILTON COUNTY

ALABAMA

INDEX



MAP PAGE
TOWN OF CLANTON (1897)

ROWAN ADDITION TO CLANTON	2
C. F. BROWN'S SUBDIVISION	3
ALFRED COLLIER ADDITION	4
W. M. ADAMS' LAND	5
WADE ADDITION	6
W. A. FRYBARGER ADDITION	7
LIBERTY TOWN	8
ROBERTA A. WILSON'S SEMINARY	9
TOWN OF COOPER (1903)	10
SIMONSONS ADDITION TO THORSBY	11
CONCORDIA BLOCK TO	12
EAST VERBENA	13
PART OF TOWN	14
DENNIS THORNTON LAND MT CREEK	15
INDIANAN CREEK	16
DENNIS THORNTON LAND MT CREEK	17
DENNIS PEATLAND MT CREEK	18
DANIEL LEWIS WILLIAMSON LAND VERBENA	19
J. O. WILSON LAND SEC 26 NEAR COOPER	20
MARSHALLS REAL ESTATE CO. ADDITION	21
TOWN OF JEFFERSON	22
TOWN OF COOPER (1922)	23
W. L. STEPHENS LAND NEAR COOPER	24
LEWIS-SCHAEFER TRANSFER	25
LEWISSON LAND SEC 36 NEAR VERBENA	26
LEWISSON SUBDIVISION AT THORSBY	27
LEWISSON LAND SEC 1-36 NEAR VERBENA	28
TOWN OF PELICHER	29
LEWISSON'S SUBDIVISION - 50 CLANTON	30
SOUTH END AT MAPLESHILLE	31
GILBERT WELLS LAND AT LOMAX	32
W. E. B. SCOTT LANDS	33
MOUNT HANNING CROSS RIVER	34
ROWAN ADDITION TO CLANTON	35
CARGILL CREEK CAMP	36
BRANK PLACE JEFFERSON	37
CANDLER TERRACE ADD TO CLANTON	38
SUBD. "H" THORSBY	39
WILKINSON CO. - IIA POWER CO TRANSFER	40
WATE S BALDWIN'S LANDS NEAR VERBENA	41
W. E. BALDWIN'S	42
W. E. BALDWIN'S	43
CLEAR CREEK LUMBER CO SPUR	44
W. A. C. D. NIESSE'S LANDS	45
W. A. C. D. NIESSE'S LANDS	46
W. A. C. D. NIESSE'S LANDS	47
W. A. C. D. NIESSE'S LANDS	48
W. A. C. D. NIESSE'S LANDS	49
W. A. C. D. NIESSE'S LANDS	50
W. A. C. D. NIESSE'S LANDS	51
W. A. C. D. NIESSE'S LANDS	52
W. A. C. D. NIESSE'S LANDS	53
W. A. C. D. NIESSE'S LANDS	54
W. A. C. D. NIESSE'S LANDS	55
W. A. C. D. NIESSE'S LANDS	56
W. A. C. D. NIESSE'S LANDS	57
W. A. C. D. NIESSE'S LANDS	58
W. A. C. D. NIESSE'S LANDS	59
W. A. C. D. NIESSE'S LANDS	60
W. A. C. D. NIESSE'S LANDS	61
W. A. C. D. NIESSE'S LANDS	62
W. A. C. D. NIESSE'S LANDS	63
W. A. C. D. NIESSE'S LANDS	64
W. A. C. D. NIESSE'S LANDS	65
W. A. C. D. NIESSE'S LANDS	66
W. A. C. D. NIESSE'S LANDS	67
W. A. C. D. NIESSE'S LANDS	68
W. A. C. D. NIESSE'S LANDS	69
W. A. C. D. NIESSE'S LANDS	70
W. A. C. D. NIESSE'S LANDS	71
W. A. C. D. NIESSE'S LANDS	72
W. A. C. D. NIESSE'S LANDS	73
W. A. C. D. NIESSE'S LANDS	74
W. A. C. D. NIESSE'S LANDS	75
W. A. C. D. NIESSE'S LANDS	76
W. A. C. D. NIESSE'S LANDS	77
W. A. C. D. NIESSE'S LANDS	78
W. A. C. D. NIESSE'S LANDS	79
W. A. C. D. NIESSE'S LANDS	80
W. A. C. D. NIESSE'S LANDS	81
W. A. C. D. NIESSE'S LANDS	82
W. A. C. D. NIESSE'S LANDS	83
W. A. C. D. NIESSE'S LANDS	84
W. A. C. D. NIESSE'S LANDS	85
W. A. C. D. NIESSE'S LANDS	86
W. A. C. D. NIESSE'S LANDS	87
W. A. C. D. NIESSE'S LANDS	88
W. A. C. D. NIESSE'S LANDS	89
W. A. C. D. NIESSE'S LANDS	90
W. A. C. D. NIESSE'S LANDS	91
W. A. C. D. NIESSE'S LANDS	92
W. A. C. D. NIESSE'S LANDS	93
W. A. C. D. NIESSE'S LANDS	94
W. A. C. D. NIESSE'S LANDS	95
W. A. C. D. NIESSE'S LANDS	96
W. A. C. D. NIESSE'S LANDS	97
W. A. C. D. NIESSE'S LANDS	98
W. A. C. D. NIESSE'S LANDS	99
W. A. C. D. NIESSE'S LANDS	100

MAP PAGE
Town of Thorsby by Daniel Brown
Town of Thorsby Daniel H. Brown
Case Murphy addition

U.S. 21 Urban - Andy Hoy
School c. page 27
page 27

Col. Murphy Page 27

P. A. Wilson's additions

Town of Clanton
Cox Addition & Murphy Addition 27

Washington Heights on Boney Road
F. H. Bankston - Land Mt. Creek 9