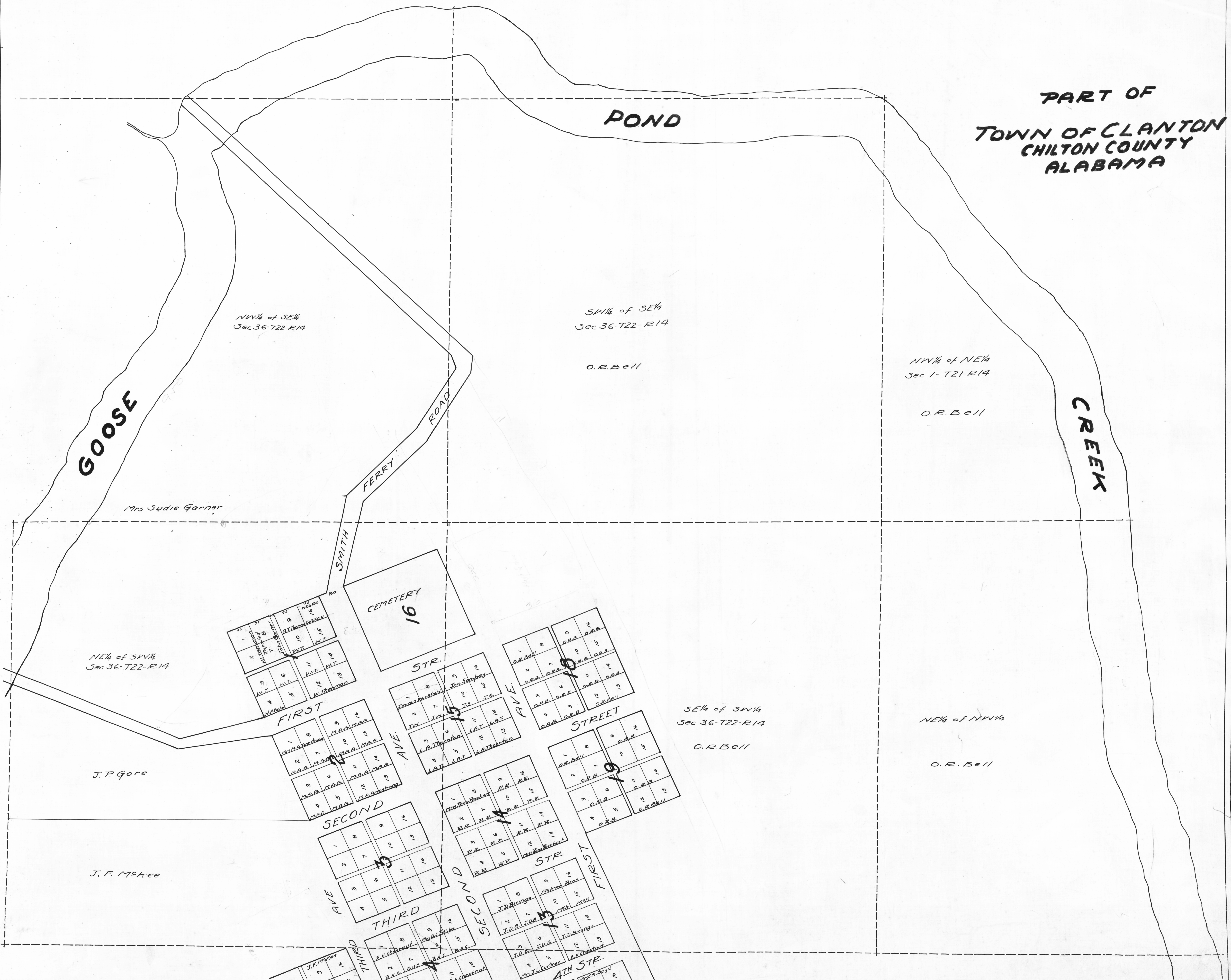


PART OF  
TOWN OF CLANTON  
CHILTON COUNTY  
ALABAMA



NW 1/4 of SE 1/4  
Sec 36-T22-R14

SW 1/4 of SE 1/4  
Sec 36-T22-R14

NW 1/4 of NE 1/4  
Sec 1-T21-R14

GOOSE

CREEK

O.R. Bell

O.R. Bell

Mrs. Sudie Garner

CEMETERY  
16

NE 1/4 of SW 1/4  
Sec 36-T22-R14

FIRST  
AVE.

STR. 1

AVE.

STREET

SE 1/4 of SW 1/4  
Sec 36-T22-R14

NE 1/4 of NW 1/4

O.R. Bell

O.R. Bell

J.P. Gore

SECOND  
AVE.

SECOND  
STR.

STR.

J.F. Mskoe

THIRD  
STR.

SECOND  
STR.

4TH STR.