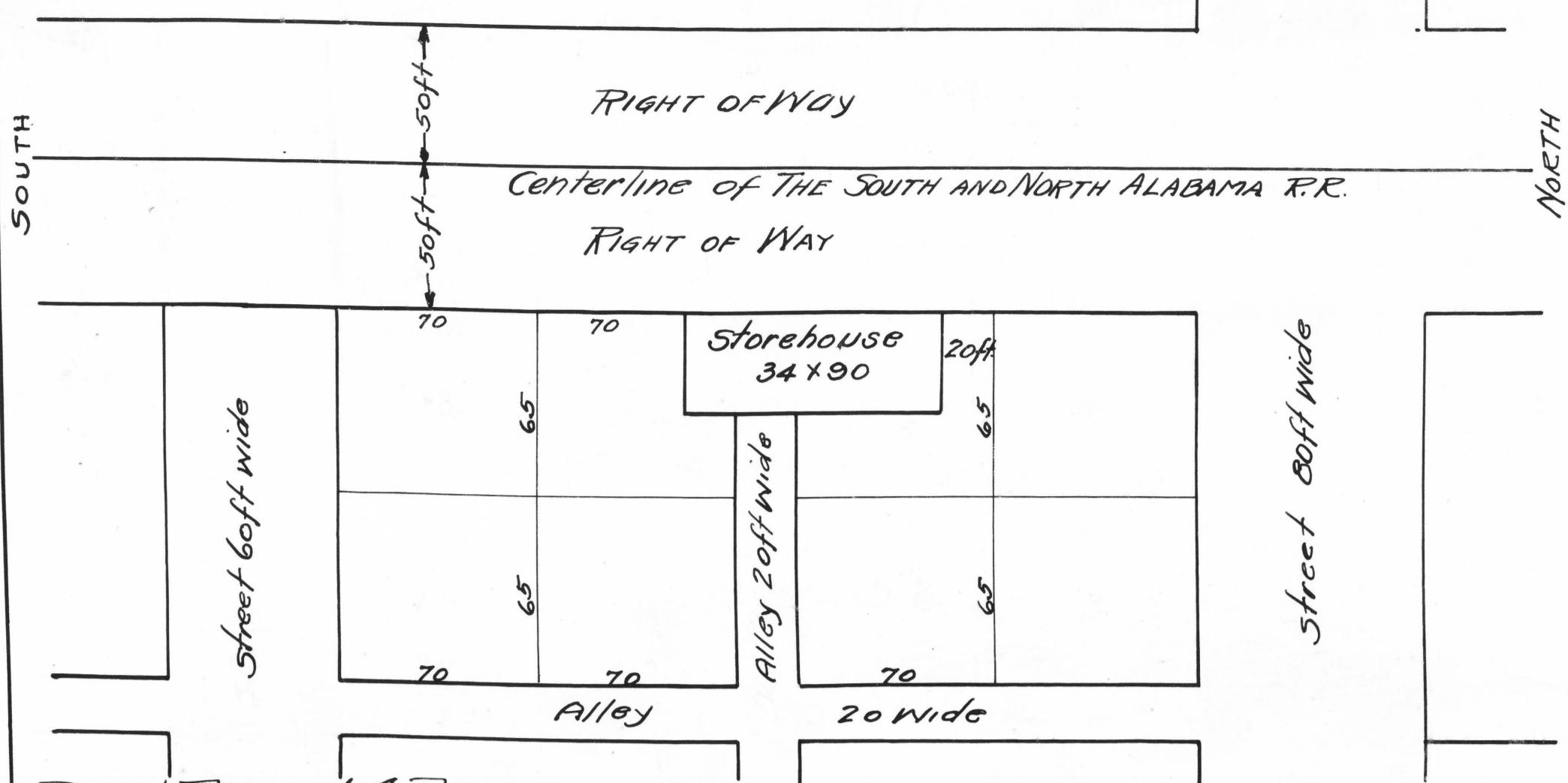
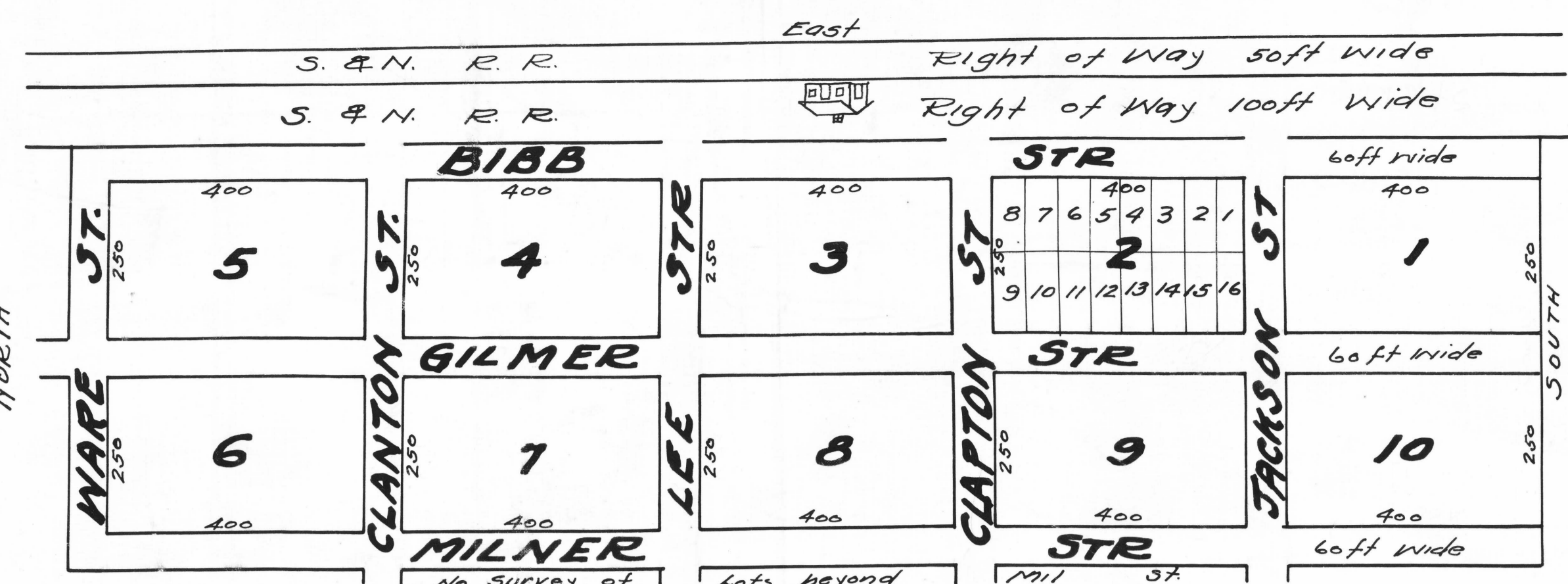


PLAN OF DEPOT GROUNDS AT CLANTON scale 50 FT to Inch



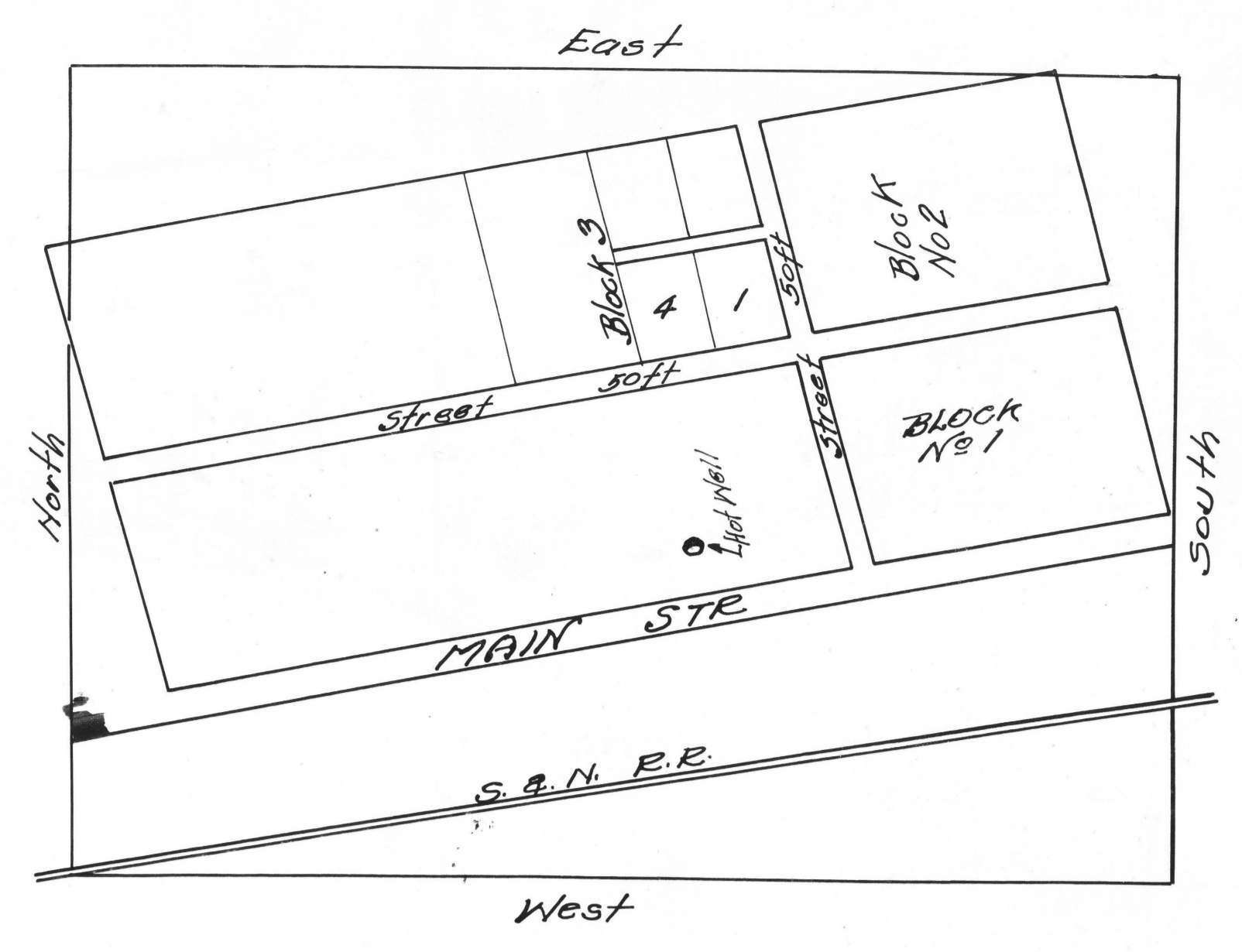
Deed Record 4 Page 15



THE ABOVE PLAT IS THE TOWN OF LOMAX, ALA.

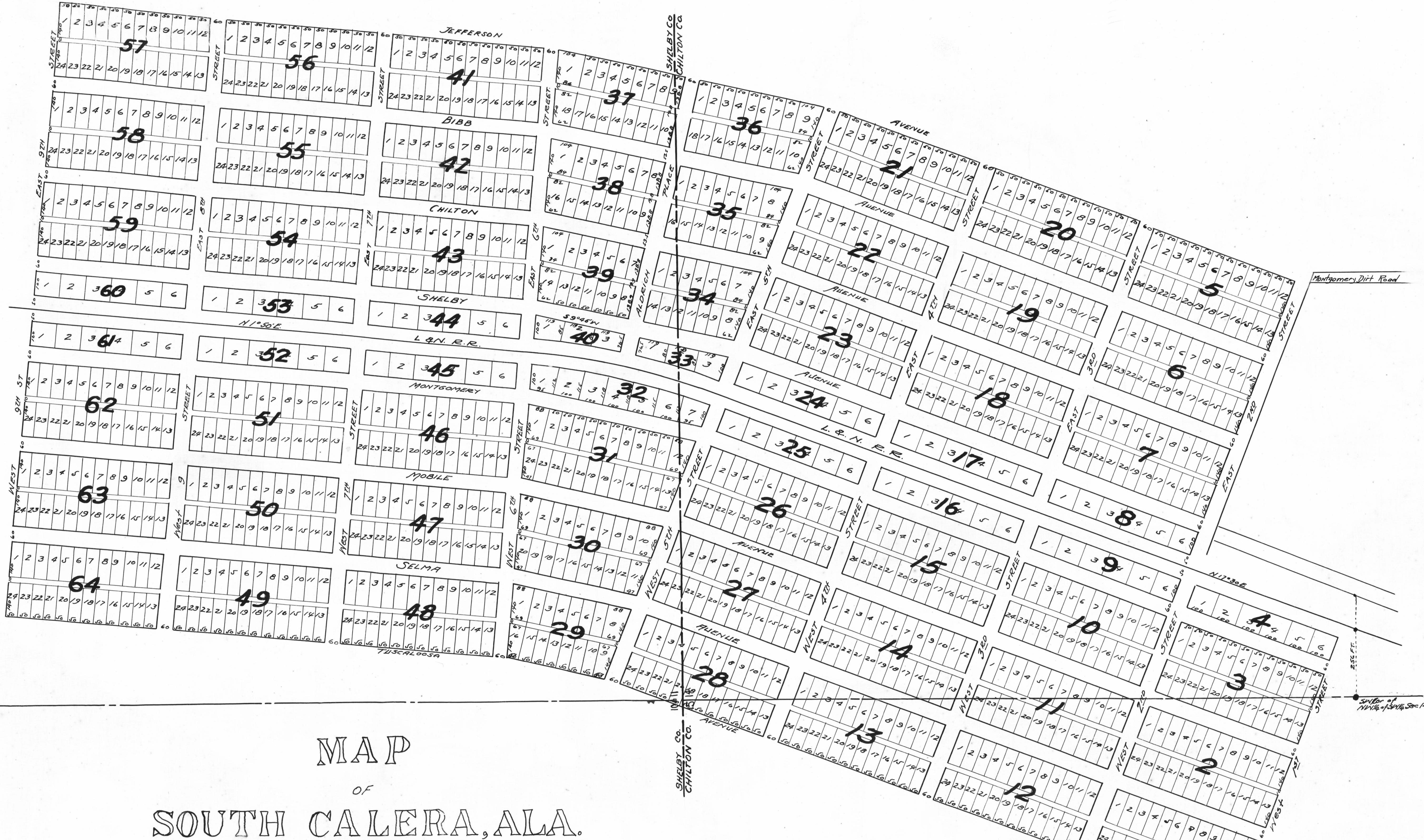
The blocks which are to be subdivided into lots of 100 ft and running back 125 ft, making each block number from 1 to 8, said property is owned by Mrs. S. L. A. Bibb, and which she desires to have recorded in the office of the Probate Court of Chilton County, Ala. December 18, 1883. The above Plat filed for the office for record on the 13th day of July 1883 H. J. Collins, Judge of Probate.

Deed Record 4 Page 125



LOCATION of HOT WELL

Deed Record 7 Page 377



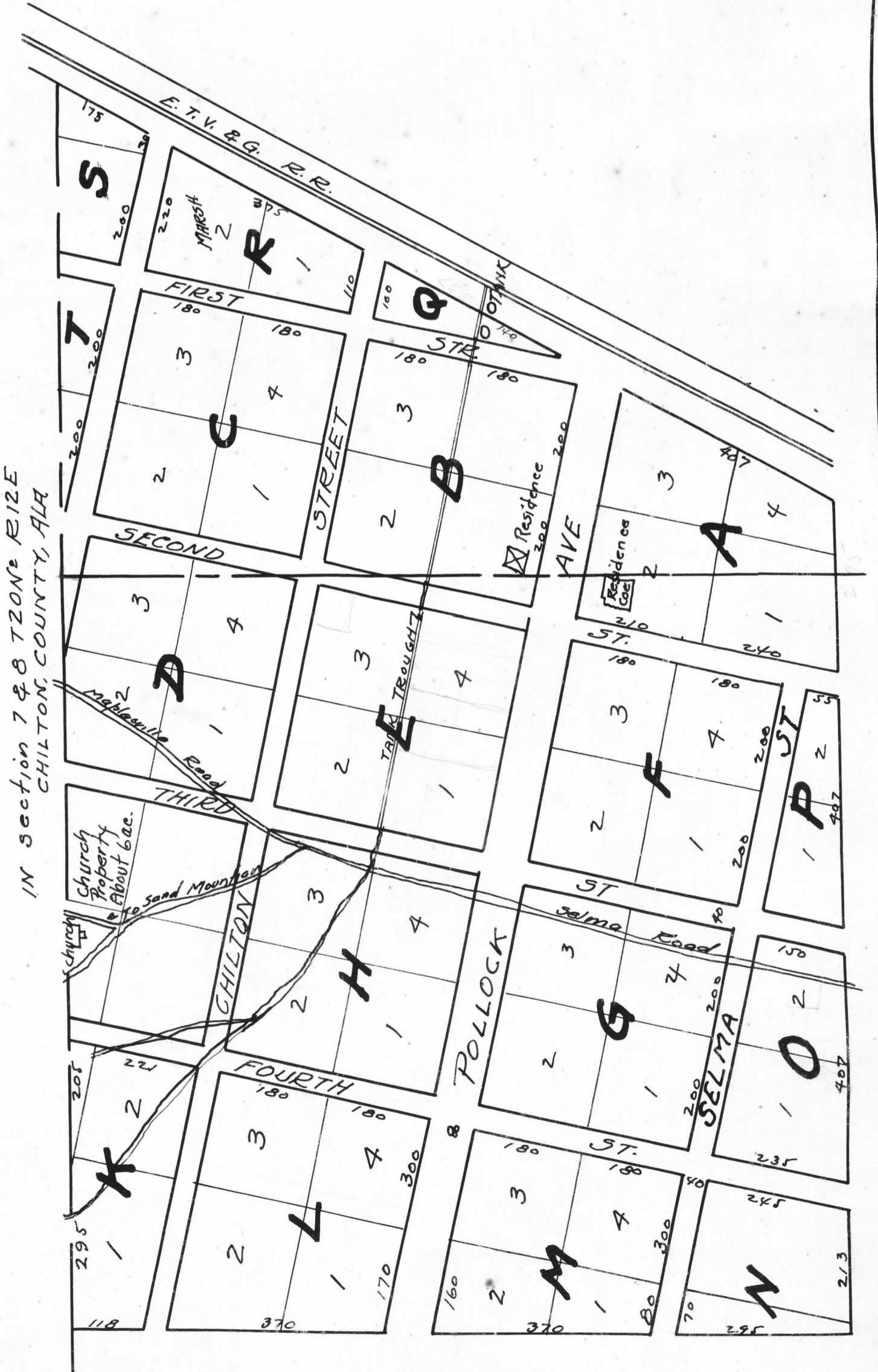
MAP OF SOUTH CALERA, ALA. PROPERTY OF SOUTH CALERA LAND IMPROVEMENT CO.

The South Calera Land and Improvement Company reserves the fee simple title to the streets, avenues and alleys and the right to sell easements and servitudes in and upon the same, granting to the public only the use thereof as highways.

This certifies that this plat is a correct representation of a survey made by me for the South Calera Land and Improvement Co. It being a subdivision into Lots and Improvement Co. It being a subdivision into Lots (numbering 103) of parts of Sections 10-14-15-16-17-18-19-20 of Township 7 N. Range 13 E. This land being in Shelby and Chilton Counties, State of Ala. The location of the NW corner of the NW 1/4 of Section 14 is shown on this plat. The relative position of the lots with respect to the said NW corner are indicated by the bearing and distance as shown.

Birmingham Ala Aug 27 1887 Executed and acknowledged this 28th day of Sept. 1887 W. F. Aldrich as Pres of South Calera Land & Improvement Co.

State of Alabama Shelby County John A. Campbell, a Justice of the Peace in and for said county and State hereby certifies that Wm F. Aldrich whose name is signed here as President of the South Calera Land and Improvement Co. and who is known to me to be such officer, acknowledged before me this day that being informed of the making and contents of the above map of the lands of the South Calera Land & Improvement Co. now divided into lots that that he signed same voluntarily as a true and correct map. This Sept 28th 1887 Given under my hand signed John A. Campbell Justice Peace.



MAP STANTON

Deed Record 7 Page 641

Deed Record 7 Page 643