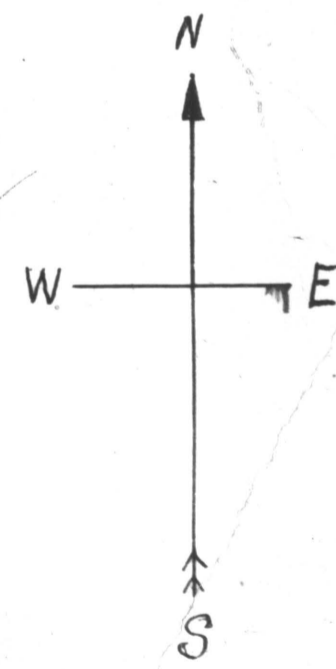
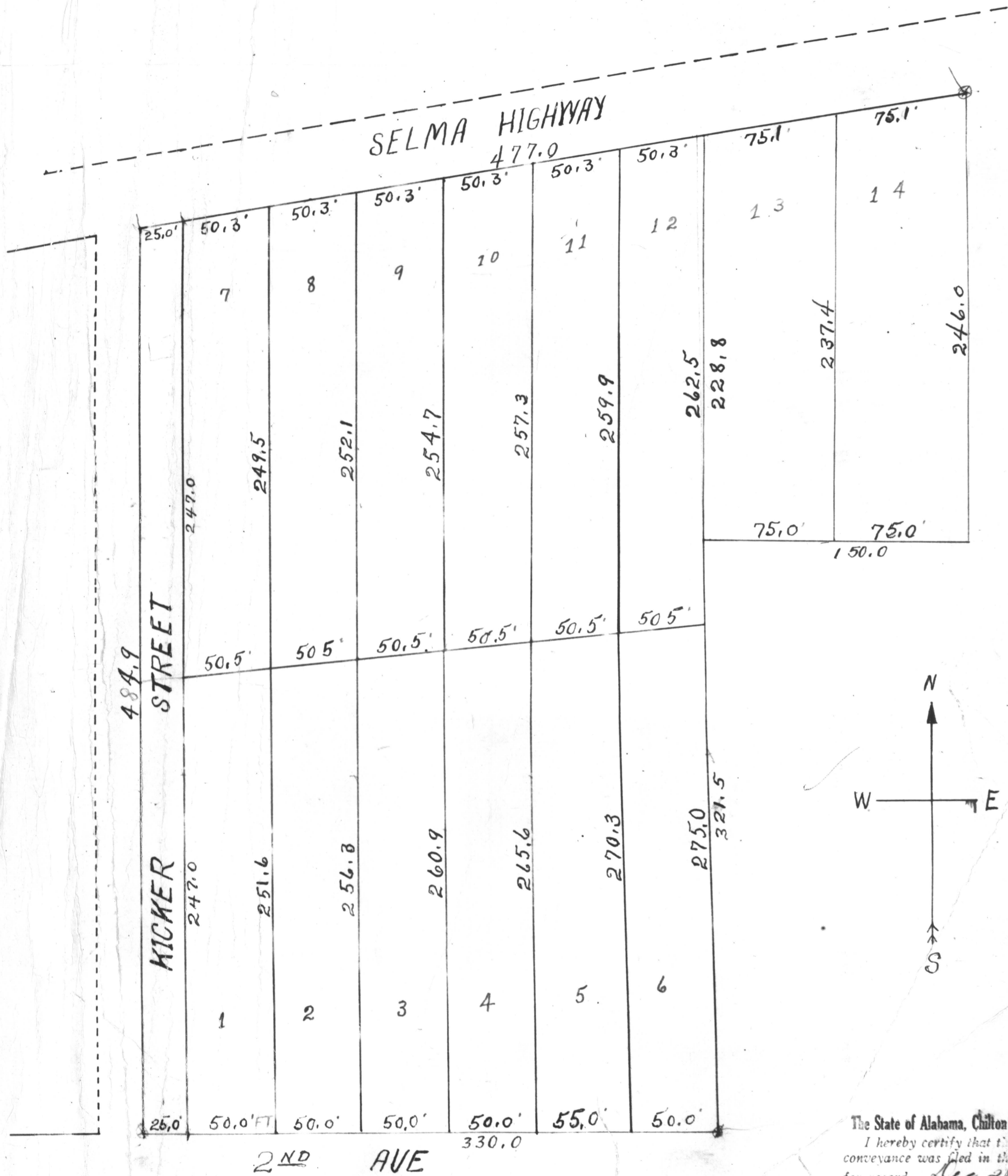


**KICKER GROVE SURVEY**  
 LOCATED IN S.E. 1/4 OF S.W. 1/4, SEC. 35, T. 22, R. 14 E.  
 SCALE 1 IN. TO 50 FT.

BY, G. E. RUSH,  
 CIVIL ENGINEER  
 CLANTON, ALA.



The State of Alabama, Chilton County.  
 I hereby certify that the within  
 conveyance was filed in this office  
 for record. See 21. 28  
 at ..... o'clock ..... M., and  
 recorded in Map ..... Record  
 2 page 5 and examined  
 L. H. Reynolds.  
 Fee \$ ..... Judge of Probate