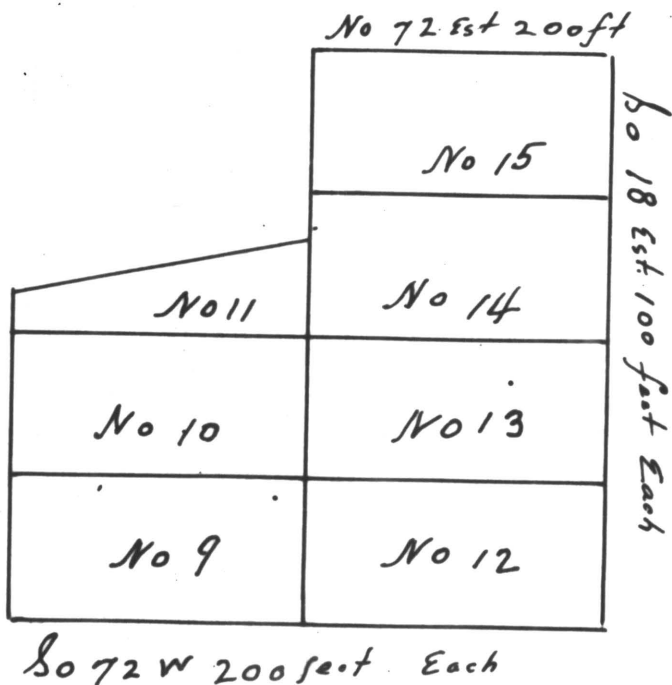
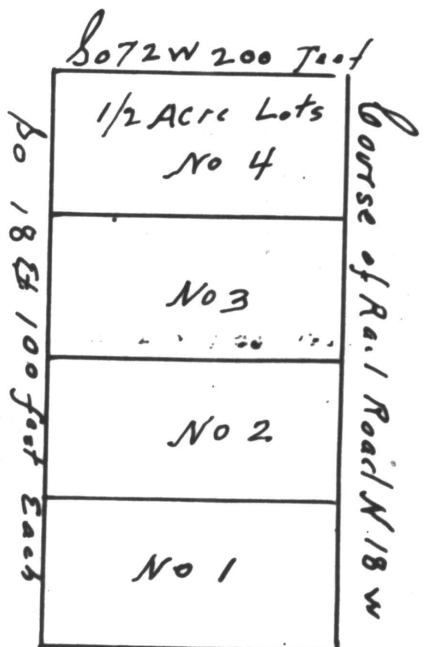
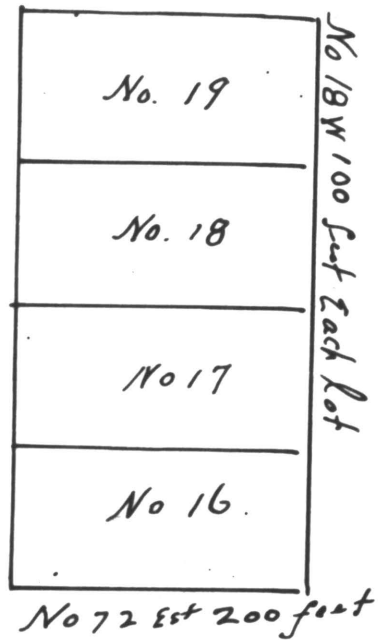
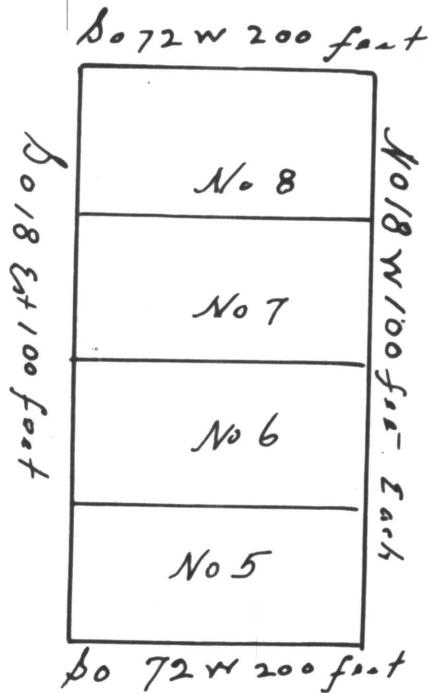


The State of Alabama } I have surveyed and laid a Town in said County on the  
 Bibb County } Rail Road in Section 21<sup>st</sup> Township 21<sup>st</sup> Range 12 East and  
 call the name of said Town Cuba at the place called Maplesville Depot on the West  
 half of the North East quarter of Section 21<sup>st</sup> Township 21<sup>st</sup> Range 12 East it being near  
 the south end of said half quarter and on the Road leading to Selma and where it  
 crosses the Rail Road which is represented by the next plan. Given under the 30 day  
 of August 1853 fees of 5.00  
 Will H. Wilson surveyor.



The foregoing Plot was filed in office for Record September 18<sup>th</sup> 1854 and  
 was Recorded the same day.  
 Jno W. Buttle Judge of Probate.

STATE OF ALABAMA, CHILTON COUNTY  
 I hereby certify that the within conveyance was filed  
 in this office for record May 17 1854  
 at 11:15 o'clock P. M. and recorded in Map  
 Record        page 7 and examined  
W. L. Garrison  
 Fee \$        Judge of Probate