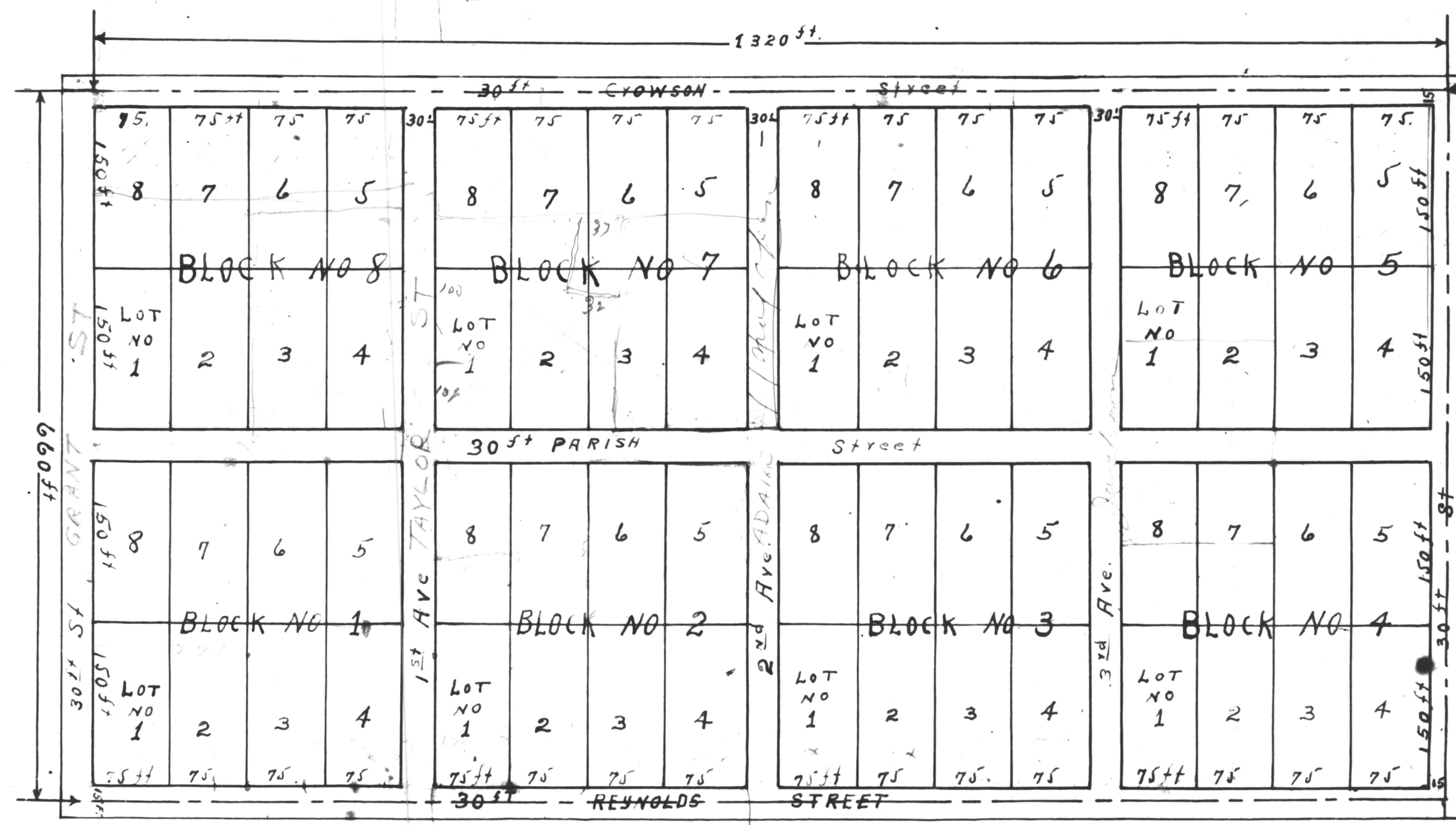


NORTH



N.E. Coy
 of
 S.W. 1/4 of N.E. 1/4
 Sec 36,
 T¹/₆ - 22,
 R² - 14.

CROWSON - ADDITION TO
CLANTON CHILTON COUNTY ALABAMA.

SCALE One Inch To One Hundred Feet

By G.E. RUSH.