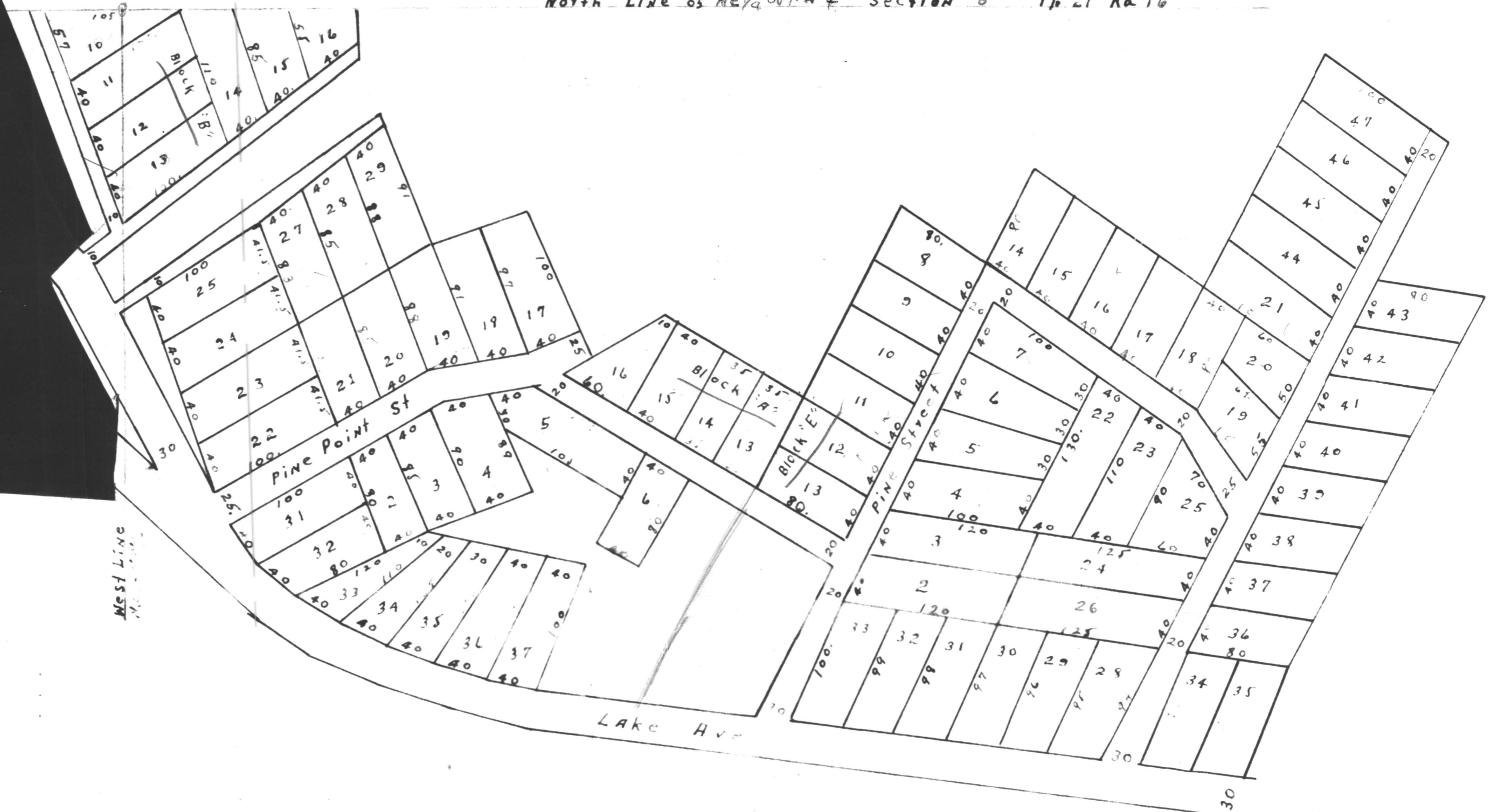


NORTH LINE OF NE 1/4 OF NW 1/4 SECTION 8 T11 R16



**THE PINES - LAKE MITCHELL**  
 CHILTON COUNTY - ALABAMA

SCALE 1" = 80'

State of Alabama, Chilton County  
 I hereby certify that the within  
 conveyance was filed in this office  
 for record Oct 24, 1938  
 at 10:00 o'clock A.M. and  
 recorded in map Book  
2 page 41 and examined  
J. Lee Smith  
 Judge of Probate.

*Handwritten notes:*  
 3. 4. 1938  
 H. E. ...

8 21 16