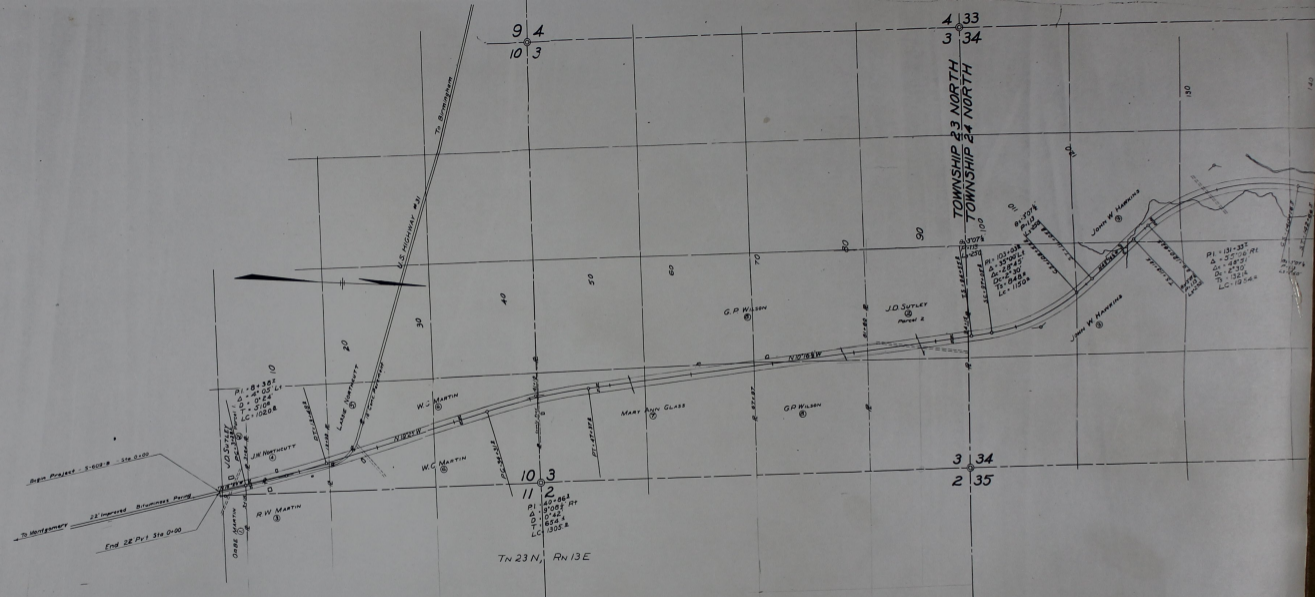


6,085, No. 10, 10479
 Chilton Co. - Survey of Road
 U.S.N. Map (2, 00081)

RIGHT OF WAY MAP
 S-609-B CHILTON COUNTY
 U.S. 31 between Jamison and Shelby County Line
 Scale: 1" = 400'
 J.C.D. 1/22/41



TN 23 N, RN 13 E