

C. N. PARNELL SUBDIVISION

C. N. PARNELL SUBDIVISION, being a part of the NE. 1/4 of Section 21, T. 21N., R. 12E., St. Stephen Meridian, in town of Maplesville, Chilton County, Alabama, as surveyed by B. E. REED, Registered Surveyor No. 1555 in January 1952.

SURVEYOR-OWNER CERTIFICATE
STATE OF ALABAMA.
COUNTY OF MONTGOMERY

This is to certify that B. E. REED, Registered Surveyor No. 1555 has surveyed and subdivided the lands of the C. N. PARNELL SUBDIVISION represented by the accompanying map, and that we, B. E. REED, as such surveyor, and LUCIE PARNELL HINES, as Administratrix of the C. N. PARNELL ESTATE, do hereby adopt, accept, and correctness of the accompanying map is certified to this 21 day of February 1952.

B. E. Reed
SURVEYOR.

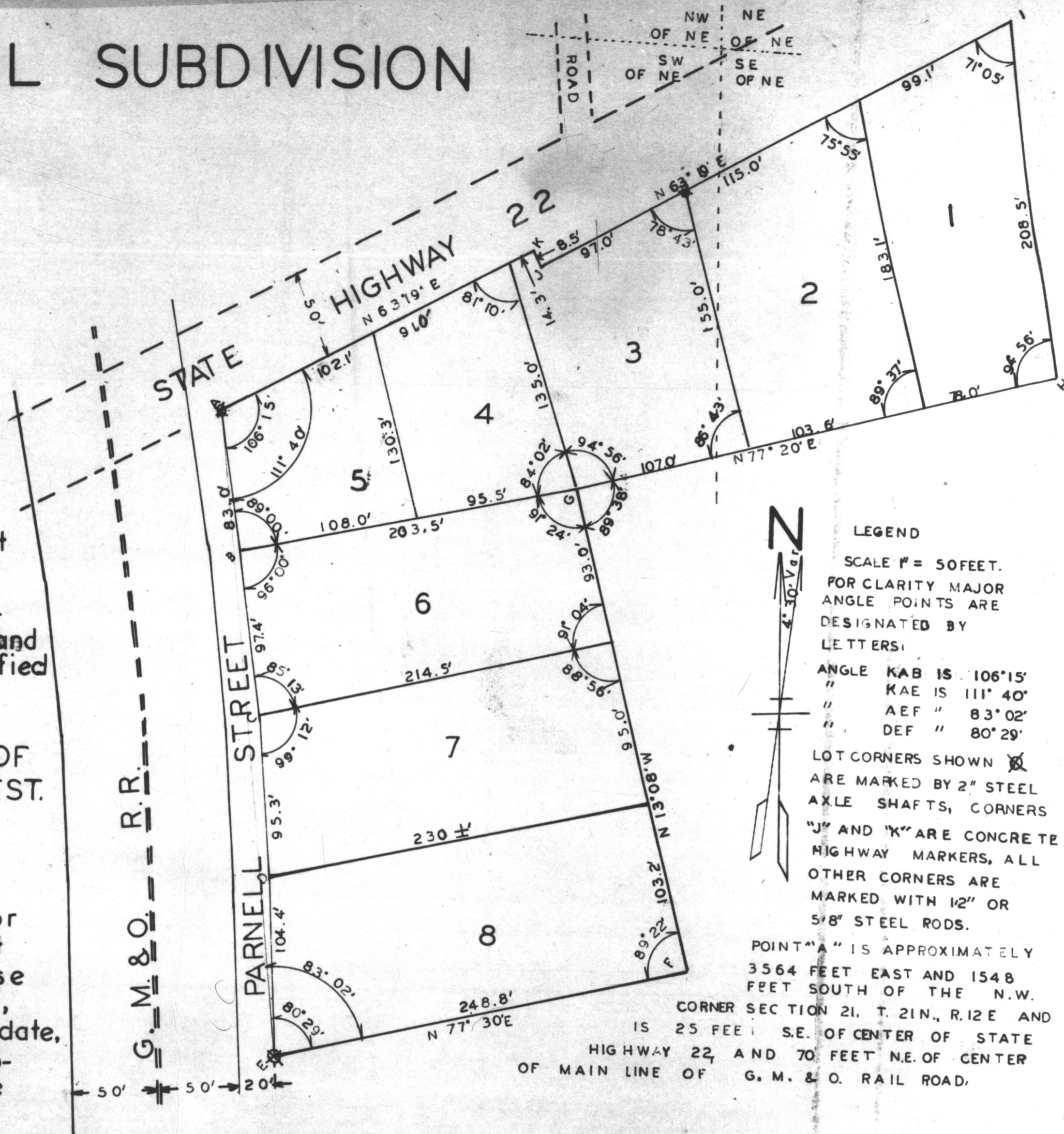
Lucie Parnell Hines
ADMINISTRATRIX OF
THE C. N. PARNELL EST.

NOTARY PUBLIC CERTIFICATE.
STATE OF ALABAMA.
MONTGOMERY COUNTY.

I, ARTHUR J. REID, a Notary Public in and for said County and State, do hereby certify that B. E. REED and LUCIE PARNELL HINES, whose names are signed to the foregoing certificate, and who are known to me, acknowledge on this date, being informed of the contents of the accompanying certificate, they executed the same voluntarily on the day same bears date.

Given under my hand this 21 day of February 1952.

Arthur J. Reid
NOTARY PUBLIC.



LEGEND
SCALE 1" = 50 FEET.
FOR CLARITY MAJOR ANGLE POINTS ARE DESIGNATED BY LETTERS:
ANGLE KAB IS 106°15'
" KAE IS 111°40'
" AEF " 83°02'
" DEF " 80°29'

LOT CORNERS SHOWN ARE MARKED BY 2" STEEL AXLE SHAFTS, CORNERS "J" AND "K" ARE CONCRETE HIGHWAY MARKERS, ALL OTHER CORNERS ARE MARKED WITH 1/2" OR 5/8" STEEL RODS.

POINT "A" IS APPROXIMATELY 3564 FEET EAST AND 1548 FEET SOUTH OF THE N.W. CORNER SECTION 21, T. 21N., R. 12E AND IS 25 FEET S.E. OF CENTER OF STATE HIGHWAY 22, AND 70 FEET N.E. OF CENTER OF MAIN LINE OF G. M. & O. RAIL ROAD.

The foregoing is a map and accompanying certificate filed in this office for record and recorded in Map Book 3 on Page 16 this 22 day of February 1952.

W. P. Parvill
JUDGE OF PROBATE
CHILTON COUNTY, ALABAMA.