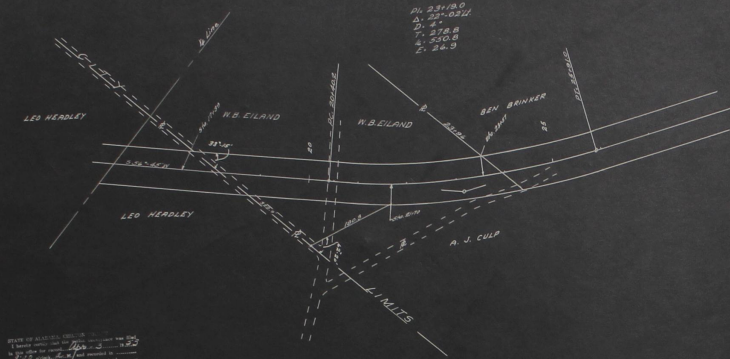


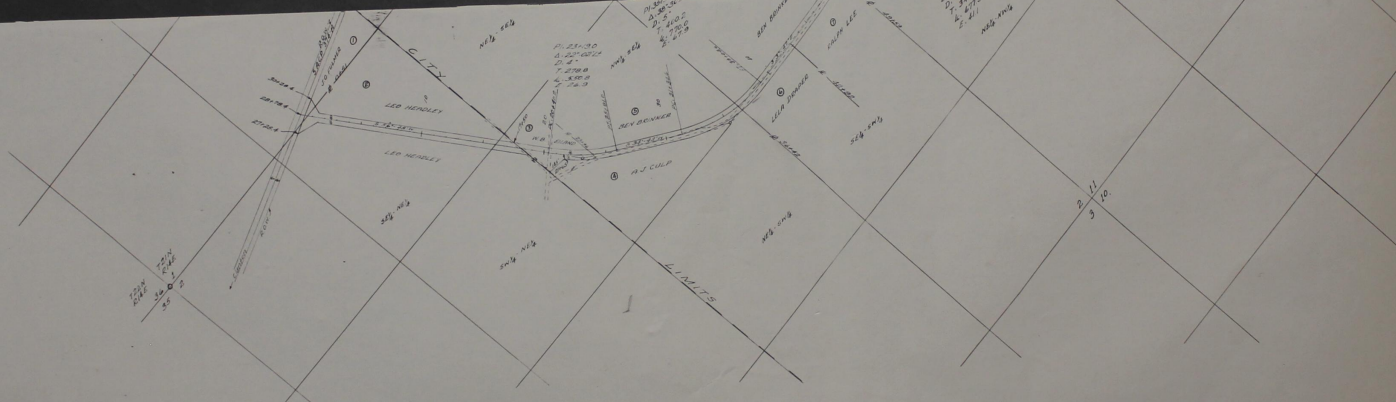
AMENDED SECTION OF  
RIGHT OF WAY MAP  
SAC P 3124-A  
CHILTON COUNTY  
SCALE 1"=100'

P. 231.90  
A. 231.9212  
D. 24  
T. 378.8  
L. 330.9  
Z. 34.9



BEFORE THE MATTER IS RECORDED  
I, J.D. Bullington, Surveyor, do hereby certify that the foregoing is a true and correct copy of the original map as filed in my office on this 11th day of May, 1934.

J.D. Bullington, County Engineer



P. 231.90  
A. 231.9212  
D. 24  
T. 378.8  
L. 330.9  
Z. 34.9

P. 231.90  
A. 231.9212  
D. 24  
T. 378.8  
L. 330.9  
Z. 34.9

RIGHT OF WAY MAP  
SAC P 3124-A  
CHILTON COUNTY  
SCALE 1"=400'

STATE OF ALABAMA  
COUNTY OF CHILTON  
I, J.D. Bullington, a Registered Engineer and Land Surveyor  
of Chilton County, Alabama, hereby certify that the foregoing is a true  
and correct copy of the original map as filed in my office on this 11th day of May, 1934.  
Recorded in Chilton County, Alabama.

Registered Engineer and Surveyor