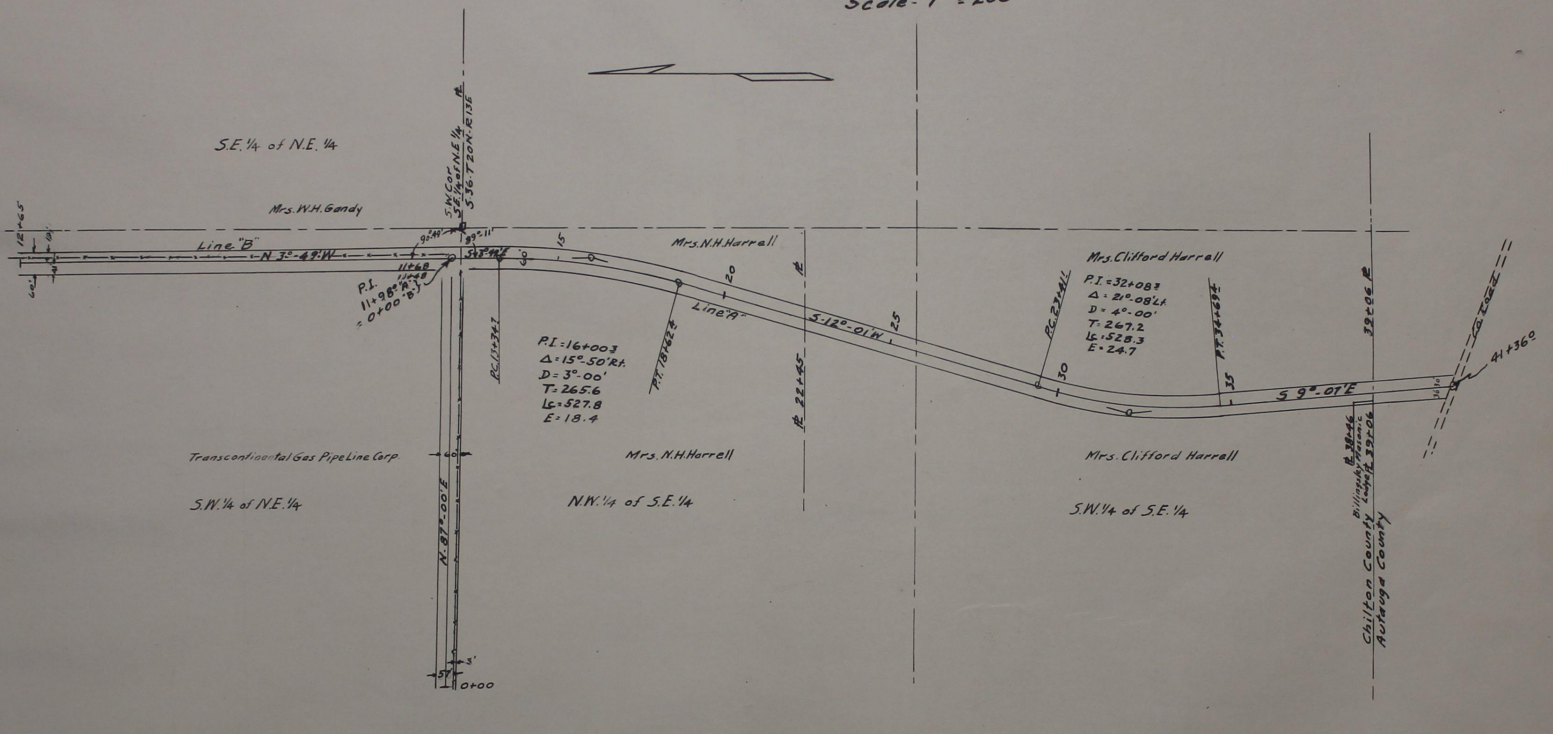


Maintenance Project
 From Gas Plant to Autauga Co. Line
 at Billingsley.
 Scale - 1" = 200'



SE 1/4 of NE 1/4

Mrs. N.H. Gandy

Line B
 N 3° 49' W

SW COR. NE 1/4
 S 16.72 ON R 15'

PI = 11+98.7
 Δ = 0° 00' R

PI = 16+00.3
 Δ = 15° 50' R
 D = 3° 00'
 T = 265.6
 L = 527.8
 E = 18.4

Transcontinental Gas Pipeline Corp.

SW 1/4 of NE 1/4

Mrs. N.H. Harrell

NW 1/4 of SE 1/4

Mrs. Clifford Harrell

PI = 32+08.7
 Δ = 21° 08' L
 D = 4° 00'
 T = 267.2
 L = 528.3
 E = 24.7

Mrs. Clifford Harrell

SW 1/4 of SE 1/4

Billingsley
 Chilton County Lumb. 391.04
 Autauga County

1" = 200'

Jan 15 1937
 m. W. Chipe