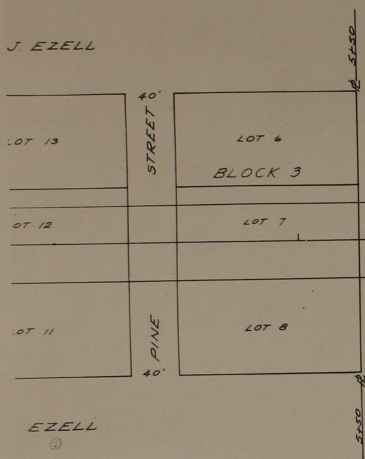


J. EZELL

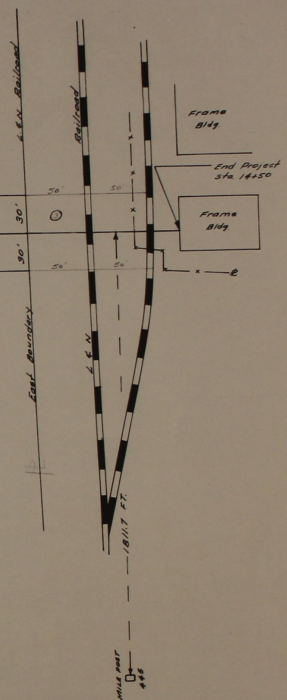


A. REEDIE TAYLOR

S 61° 00' W

A. REEDIE TAYLOR

AL4-5019  
200-24  
T-22  
A-14



RIGHT OF WAY MAP  
 SACP 3201-A  
 CHILTON COUNTY  
 SCALE 1" = 50'

STATE OF ALABAMA  
 COUNTY OF CHILTON  
 I, H.J. Lewis, a Registered Engineer and Land  
 Surveyor of Chilton County, Alabama, hereby certify that  
 the foregoing is a true and correct map of State Aid County  
 Road Project Number 3201-A, located in Chilton County,  
 Alabama.

H. J. Lewis  
 Registered Engineer & Land Surveyor

STATE OF ALABAMA, CHILTON COUNTY  
 I hereby certify that the foregoing map was filed  
 in this office for record on February 13, 1926  
 at 11:55 a.m. and recorded in  
 Record of Maps 11 and occupies  
 Pages 10, 11 of Book 100  
 Per 1, 100 Filed at Princeton