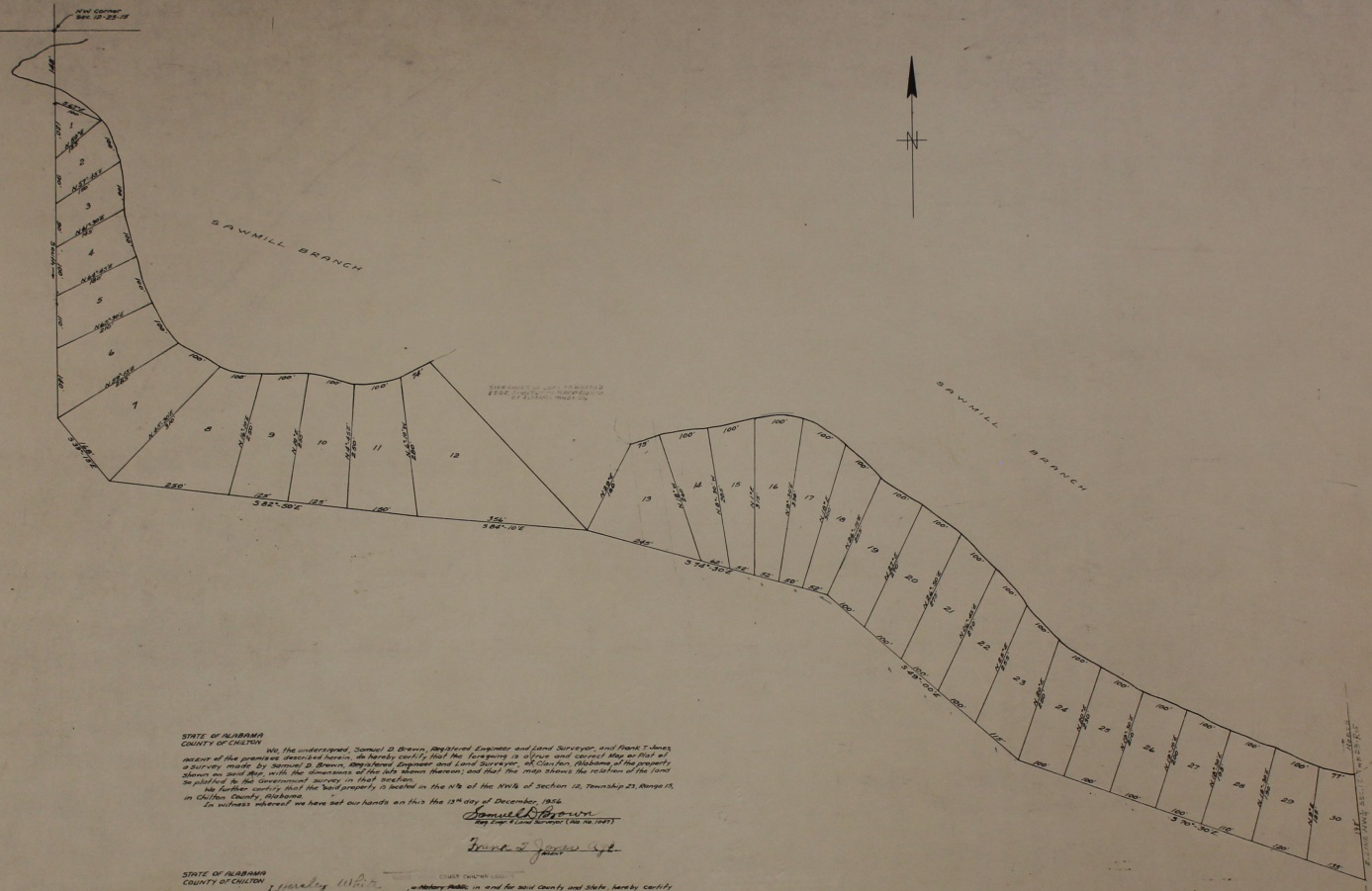
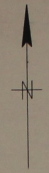


Old Corner
Sec. 12-23-16



STATE OF ALABAMA
COUNTY OF CHILTON

We, the undersigned, Samuel D. Brown, Registered Engineer and Land Surveyor, and Frank T. Jones, in view of the premises described herein, do hereby certify that the foregoing is a true and correct map or plan of a survey made by Samuel D. Brown, Registered Engineer and Land Surveyor, of Chilton County, Alabama, of the property shown on said map, with the dimensions of the lots shown thereon, and that the map shows the return of the land to the public in the development success in that section.

We further certify that the said property is located in the NW 1/4 of the NW 1/4 of Section 12, Township 21, Range 15, in Chilton County, Alabama.

In witness whereof we have set our hands on this the 15th day of December, 1954.
Samuel D. Brown
 Reg. Eng. & Land Surveyor (No. 76,104)

Frank T. Jones
 Public

STATE OF ALABAMA
COUNTY OF CHILTON

I, Samuel D. Brown, Registered Engineer and Land Surveyor, of Chilton County, Alabama, do hereby certify that the foregoing is a true and correct map or plan of a survey made by Samuel D. Brown, Registered Engineer and Land Surveyor, of Chilton County, Alabama, of the property shown on said map, with the dimensions of the lots shown thereon, and that the map shows the return of the land to the public in the development success in that section.

In witness whereof we have set our hands on this the 15th day of December, 1954.
Samuel D. Brown
 Registered Engineer and Land Surveyor

