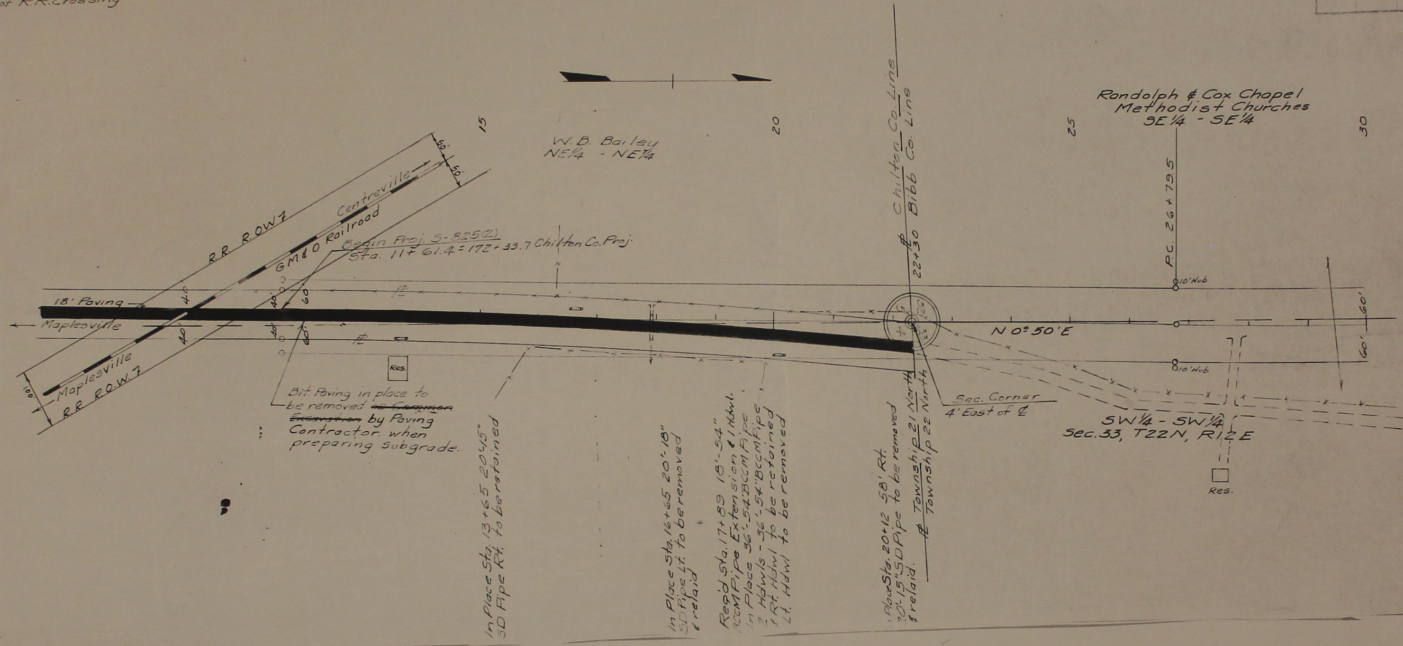


REV	BY	DATE	DESCRIPTION	SCALE	SHEET NO.	TOTAL
3	ALA	(2/12/58)			4	149

Top of R.R. Crossing



W. D. Bailey
NE 1/4 - NE 1/4

Randolph & Cox Chapel
Methodist Churches
SE 1/4 - SE 1/4

RR ROW
18' Paving
Mapleville
Mapleville RR ROW
Centreville
Railroad
G.M.E.O.
Chilton Co. Proj. S-5252
Sta. 117.61.4 = 172 + 33.7

Bit Paving in place to be removed by Paving Contractor when preparing subgrade.

In Place Sta. 13 + 6.5 - 20 + 4.5"
3D Pipe Rt. to be reformed

In Place Sta. 16 + 6.5 - 20 + 1.8"
3D Pipe Lt. To be removed & relaid

Repd Sta. 17 + 8.9 - 18' - 54"
100M Pipe Extension & Rehab.
In Place 35' 54" 8cm pipe
2 Hdws - 32' 54" 8cm pipe
1 Rt. Hdwl. to be retained
Lt. Hdwl. to be removed

In Place Sta. 20 + 12 - 58' Rt.
20' 15" 5D Pipe to be removed & relaid.
Township 22 North
Chilton Co. Line
Bibb Co. Line

Sec. Corner
4' East of

SW 1/4 - SW 1/4
Sec. 33, T22N, R12E

P.C. 26 + 79.5

10' Hd

10' Hd

Res.

STATE OF ALABAMA, CHILTON COUNTY
I hereby certify that the within instrument was filed in the office for records on this 22nd day of February, 1958, and returned to me at _____ o'clock _____ P.M., and registered on _____ day of _____ 1958, at _____ o'clock _____ P.M. and returned to me at _____ o'clock _____ P.M.
Notary Public
D. D. D.