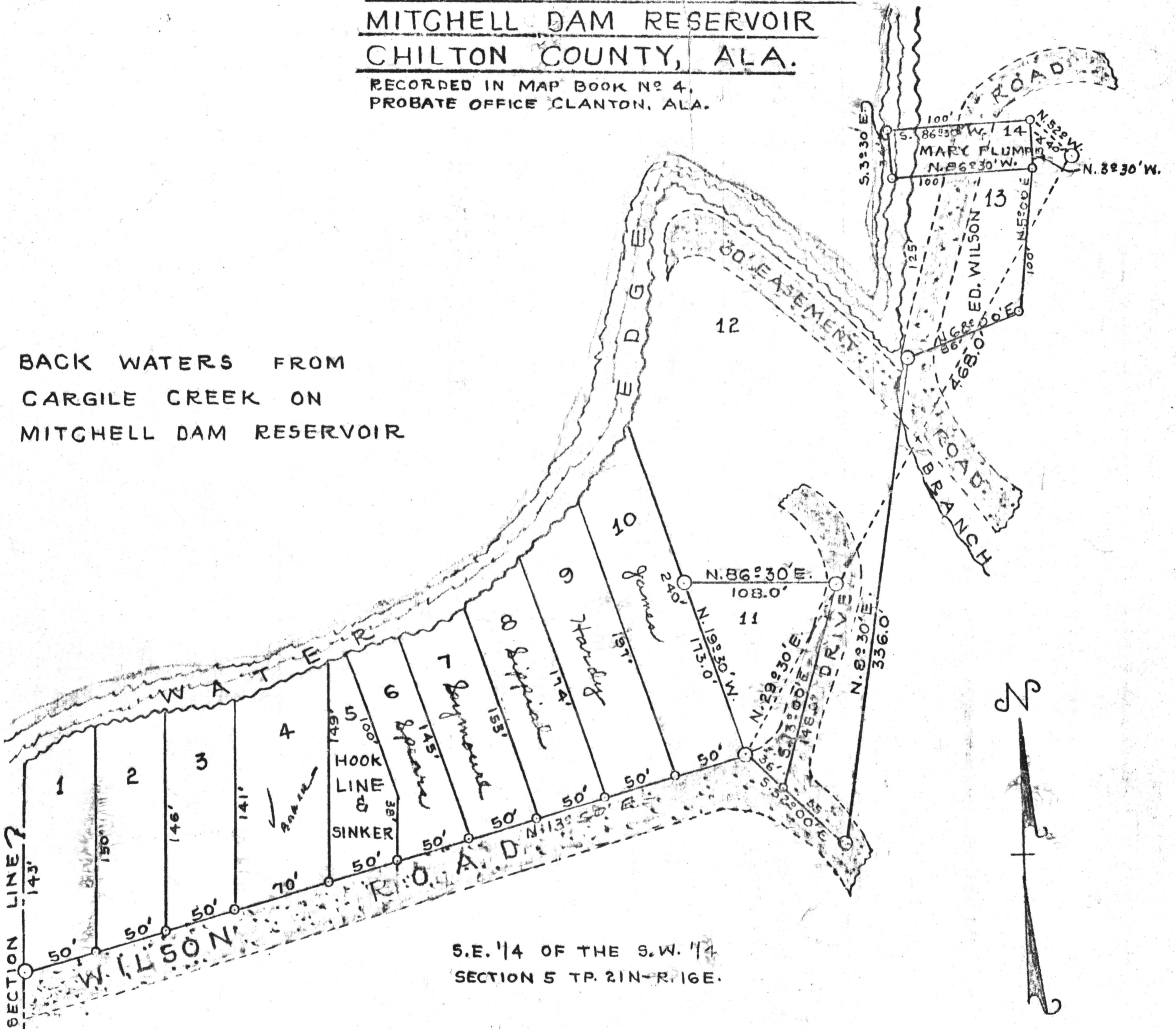


RE-SURVEY
OF
THE CAFFEE SURVEY
DIXIE FISHING CAMP
ON CARGILE BACK WATERS
MITCHELL DAM RESERVOIR
CHILTON COUNTY, ALA.

RECORDED IN MAP BOOK NO 4,
 PROBATE OFFICE CLANTON, ALA.

BACK WATERS FROM
 CARGILE CREEK ON
 MITCHELL DAM RESERVOIR



S.E. 1/4 OF THE S.W. 1/4
 SECTION 5 TP. 21N-R. 16E.

NOTE:

TRACT NO 1 THROUGH TRACT NO 14
 EXTEND NORTHELY TO BACK WATERS
 EXCEPT LOT NO 11.

REGARDLESS OF WATER STAGE ALL DISTANCES
 EXTENDING TO WATERS EDGE VARIES WITH
 WATER STAGE.

HEADLEY ENGINEERING CO.

BY: *H. F. Headley*
 H. F. HEADLEY ALA. REG. NO 1115

SCALE: 1" = 60'
 MARCH 24, 1961

S.W. CORNER
 S.E. 1/4, S.W. 1/4
 SEC. 5, TP. 21N-R. 16E.

⑤
 ⑧

SECTION LINE 7

STATE OF ALABAMA, CHILTON COUNTY
 I hereby certify that the within and filed
 in the office for record on 3-21-61
 11
 Record 7
 Fee \$ 1.00