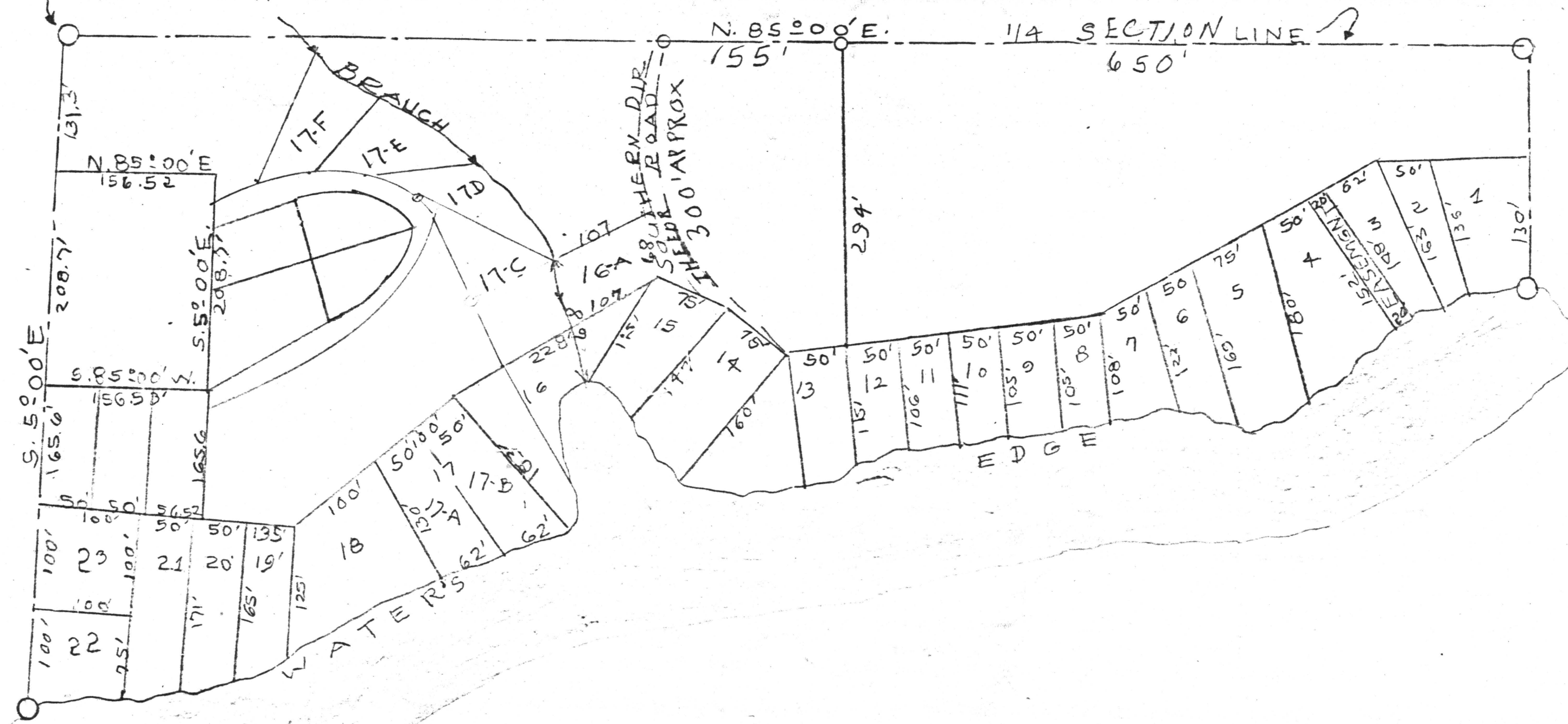


N.W. CORNER
 N.E. 1/4, S.W. 1/4
 SECTION 5, TP. 21N, R. 16E.



ADDITION TO DIXIE WILSON FISHING CAMP
 CARGILE CREEK BACK WATERS FROM
 MITCHELL DAM ON THE COOSA RIVER.
 SUB-DIVISION N^o 3
 PART OF THE N.W. 1/4 OF THE S.E. 1/4, SECTION 5, TP 21-R. 16.
 SCALE: 1"=100' -- FEB. 20, 1962

DEPARTMENT OF ALABAMA, CHILTON COUNTY
 2.10 4 7 July 2, 62
 1.00
 JUDGE OF PROBATE

HEADLEY ENGINEERING CO.
 BY: *H.E. Headley*
 H.E. HEADLEY A.L.A. REG. MET 15.