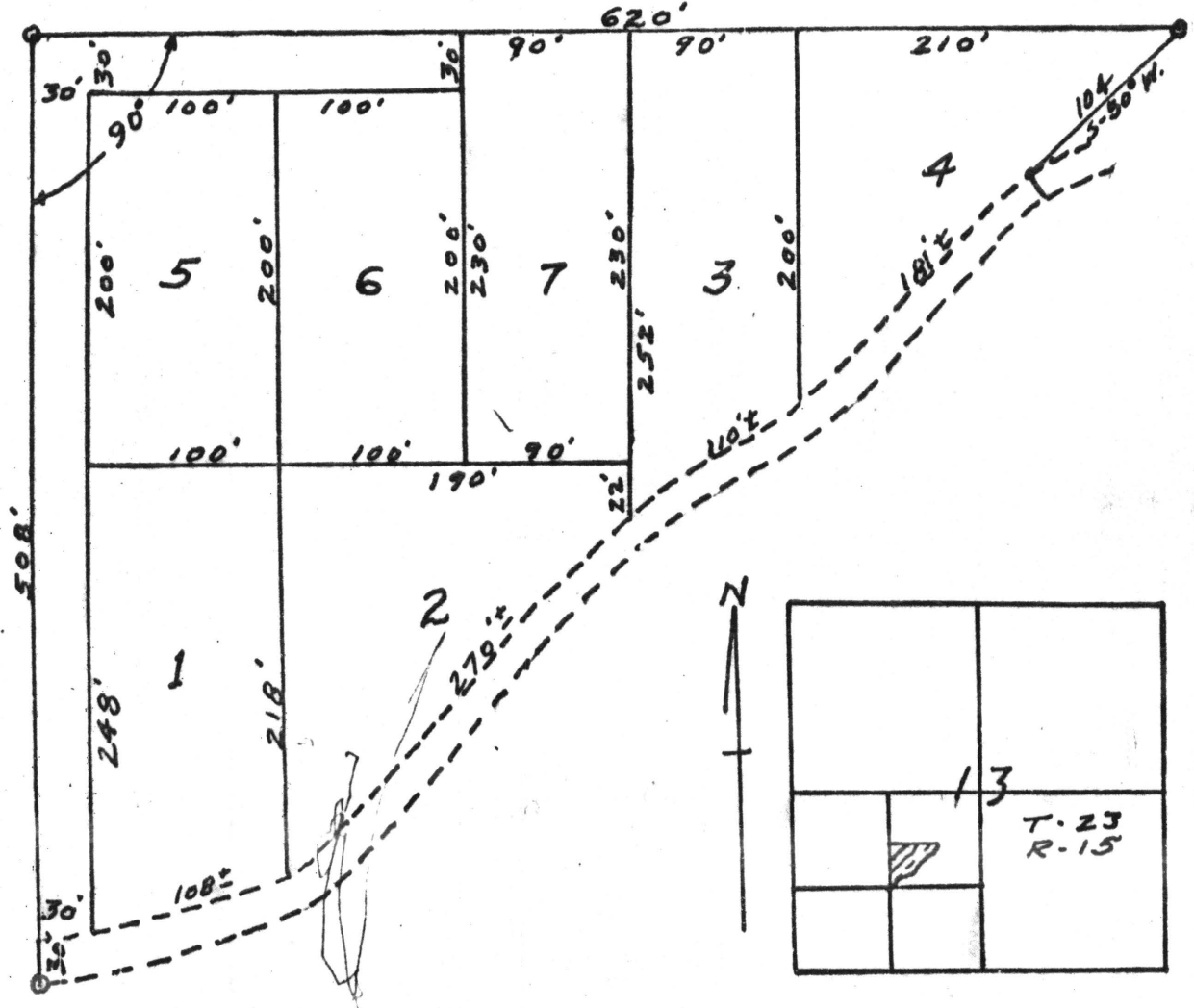


# PLAT OF BERNIE L MIMS SUBDIVISION IN THE N.E. 1/4 of S.W. 1/4 S-13; T-23; R-15



Beginning at the southwest corner of the northeast quarter of the southwest quarter of Section 13, Township 23, Range 15 and run north along west line of said forty a distance of 508' to a point; thence run at right angles east a distance of 620 feet to a point; thence run S 50° west a distance of 104 feet more or less to a point 20 feet north and at right angles to road; thence run southwesterly and parallel to said road a distance of 699' more or less to the west 40 line, thence south along said 40 line a distance of 30 feet to the point of beginning.

I, W. J. Connell, a registered land surveyor for the State of Alabama hereby certify the foregoing to be a true and correct plat and description of the Bernie L. Mims subdivision in the N.E. 1/4 of the S.W. 1/4 of Section 13, Township 23, Range 15.

*W. J. Connell*  
W. J. Connell, #3507

STATE OF ALABAMA, CHEROKEE COUNTY  
I hereby certify that the within plat was filed in this office for record on this 16th day of March, 1916, at 9:00 AM and recorded in Book 4 Page 477 of the Public Records.  
W. J. Connell, Surveyor  
J. E. White, Clerk of Public Records