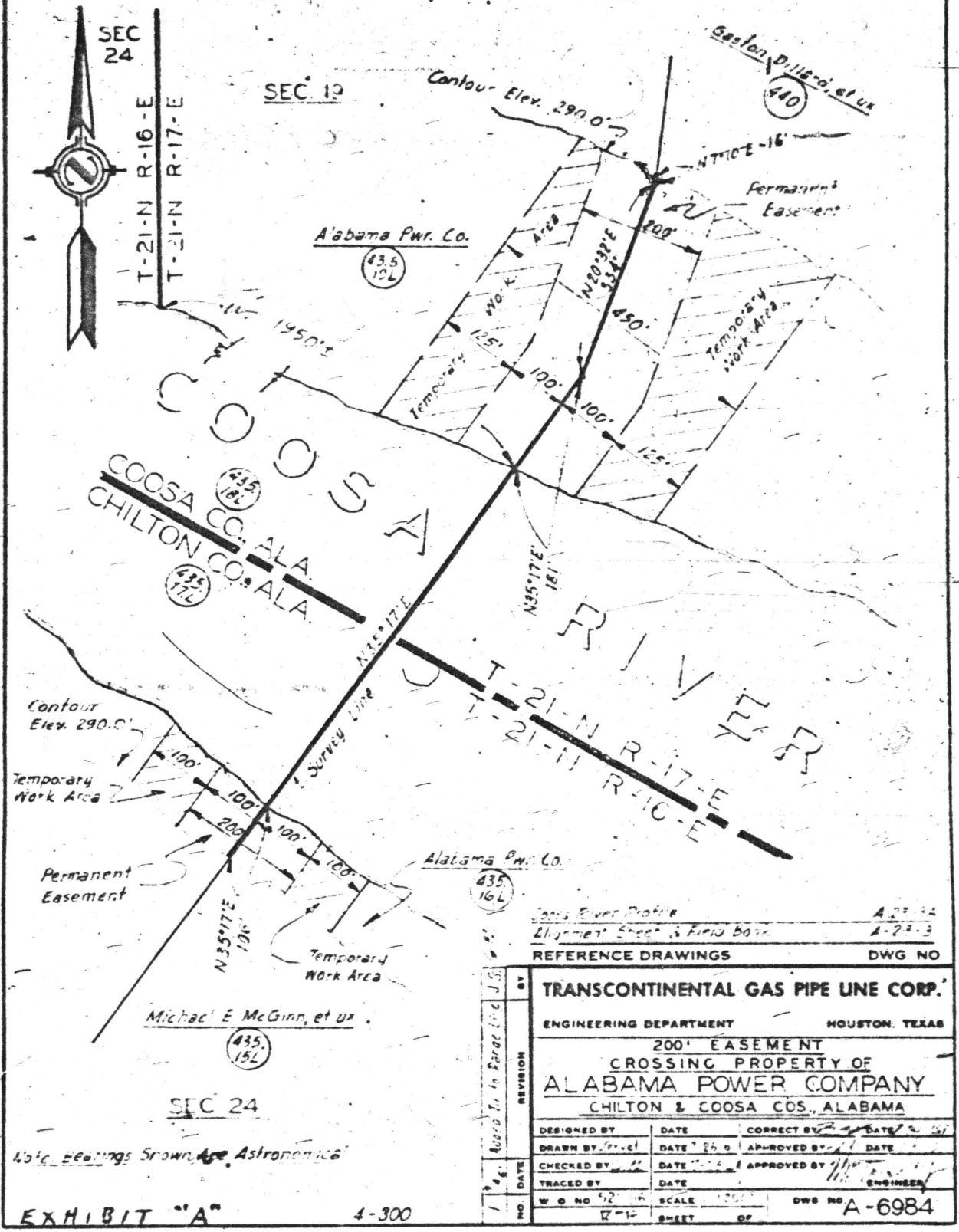


CHILTON & COOSA COUNTIES, ALABAMA

T-21-N R-16-E, SEC. 24 & T-21-N R-17-E, SEC. 19



Coosa River Profile A-27-12  
 Alignment Sheet & Field Book A-27-3  
 REFERENCE DRAWINGS DWG NO

BY	TRANSCONTINENTAL GAS PIPE LINE CORP.			
	ENGINEERING DEPARTMENT		HOUSTON, TEXAS	
REVISION	200' EASEMENT			
	CROSSING PROPERTY OF			
DATE	ALABAMA POWER COMPANY			
	CHILTON & COOSA COS., ALABAMA			
DESIGNED BY	DATE	CORRECT BY	DATE	
DRAWN BY	DATE	APPROVED BY	DATE	
CHECKED BY	DATE	APPROVED BY	DATE	
TRACED BY	DATE			
W O NO	SCALE	DWG NO	A-6984	
	1" = 100'	SHEET	OF	

Note: Bearings Shown are Astronomical

EXHIBIT "A"

4-300

STATE OF ALABAMA, COOSA COUNTY  
 I hereby certify that the within conveyance was read in the office for record at 9:00 A.M. and recorded in Record 4 pages and examined by law J. C. White Judge of Probate.

The State of Alabama, Coosa County hereby certify that the within conveyance was filed in this office for record Feb. 27 1963 at 8:30 o'clock A. M. and recorded in Plat Record 1 80 pages of the following private papers paid and not impounded by law Mar. Thomas Judge of Probate.

Fee 2.50