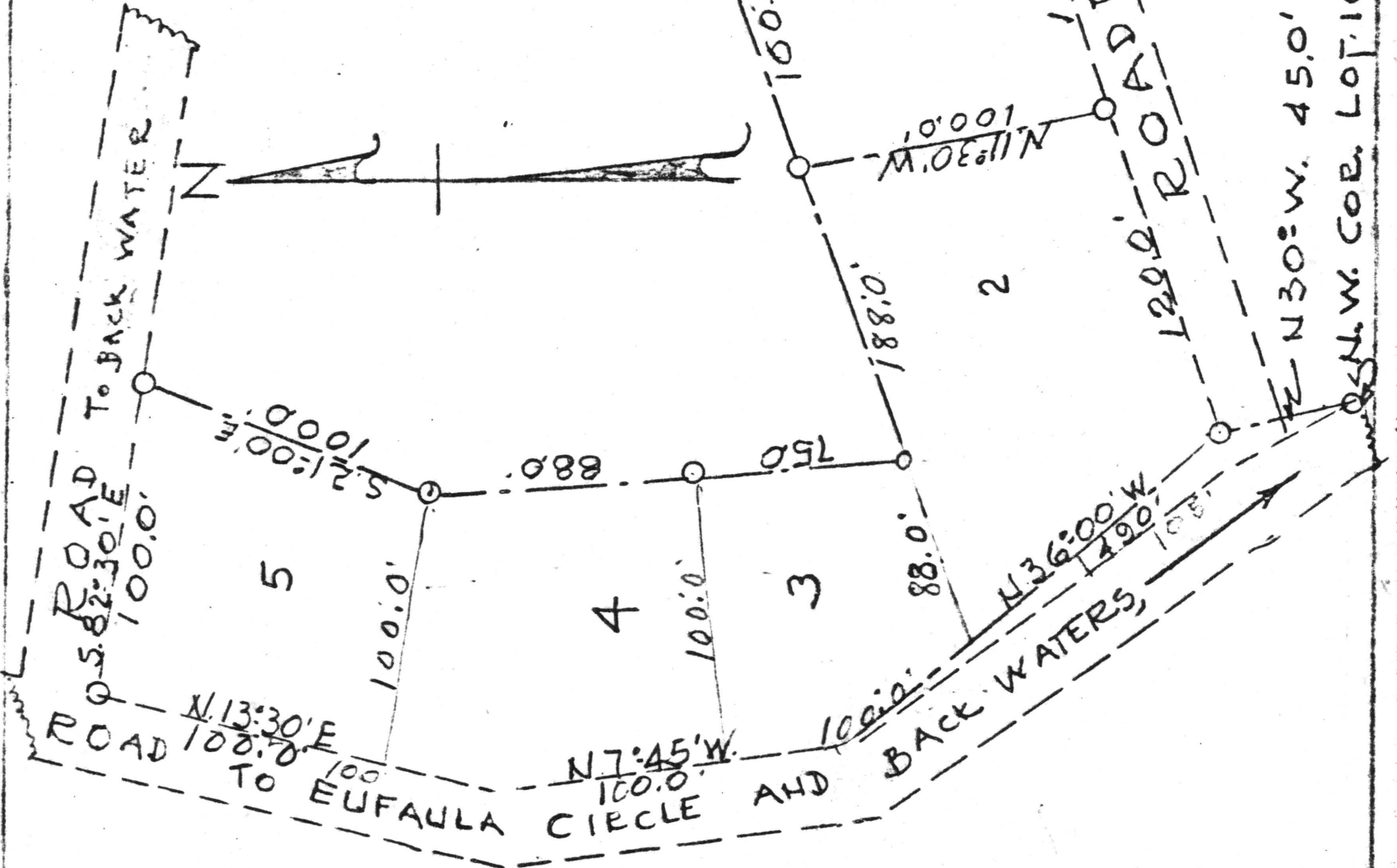


FT 5

PINSON SURVEY N:3



STATE OF ALABAMA
 CHILTON COUNTY
 I H. F. HEADLEY, A LICENSED ENGINEER AND LAND SURVEYOR
 DO HEREBY CERTIFY THAT THE MAP SHOWN HEREON IS A
 TRUE AND CORRECT SURVEY PLOTTED FROM NOTES MADE
 BY ME THIS 24TH DAY OF SEPT. 1962 THERE NO
 ENCROACHMENTS ENVOLED,

9/24/62
 SCALE 1"=50'

HEADLEY ENGINEERING CO.
 BY: *H.F. Headley*
 H. F. HEADLEY, ALA. REG. N: 1115,

2.20 P49
 March 63
 C. White
 Attorney at Law

N.W. COR. LOT 10 SURVEY N:2