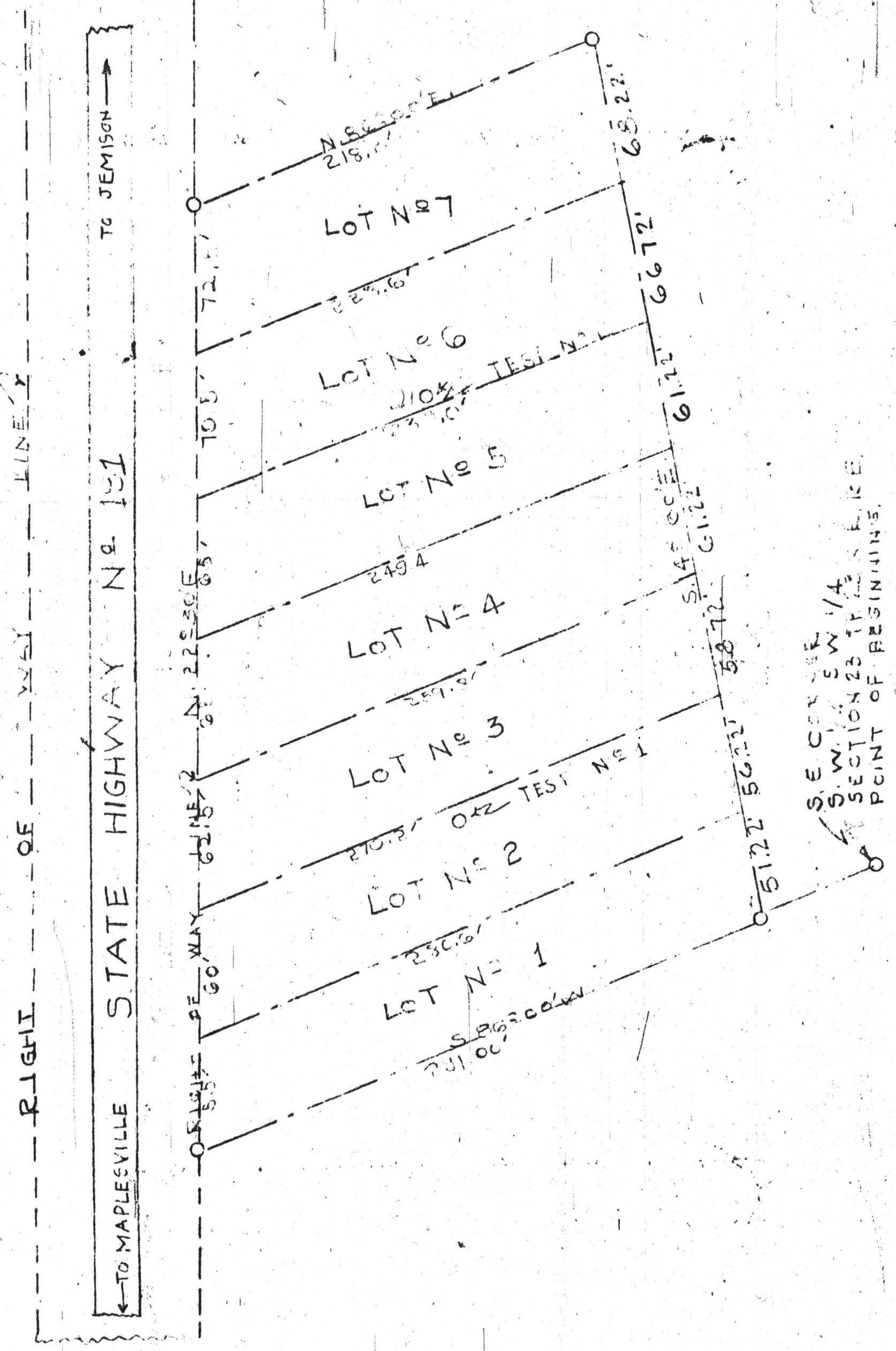


NOTE:
CITY WATER
AND NATURAL GAS
AVAILABLE TO THIS
SUB-DIVISION.



RECORD MAP OF THE GEORGE W. SINGLETERY SUB-DIVISION TO THE TOWN OF JEMISON CHILTON COUNTY ALA.

STATE OF ALABAMA
CHILTON COUNTY

I, H. F. HEADLEY A LICENSED PROFESSIONAL CIVIL ENGINEER AND LAND SURVEYOR DO HEREBY CERTIFY THAT THE MAP SHOWN HEREON IS A TRUE AND CORRECT SURVEY PLOTTED FROM THE NOTES MADE BY ME THIS DATE IN THE TOWN OF JEMISON, SITUATED, LYING AND BEING IN THE S.W. 1/4, S.W. 1/4, SECTION 23, T. 23 N. - R. 13 E. NO ENCROACHMENTS INVOLVED.

FEB. 19, 1962
SCALE: 1" = 50'

HEADLEY ENGINEERING CO.
H. F. HEADLEY ALA. REG. NO. 1115