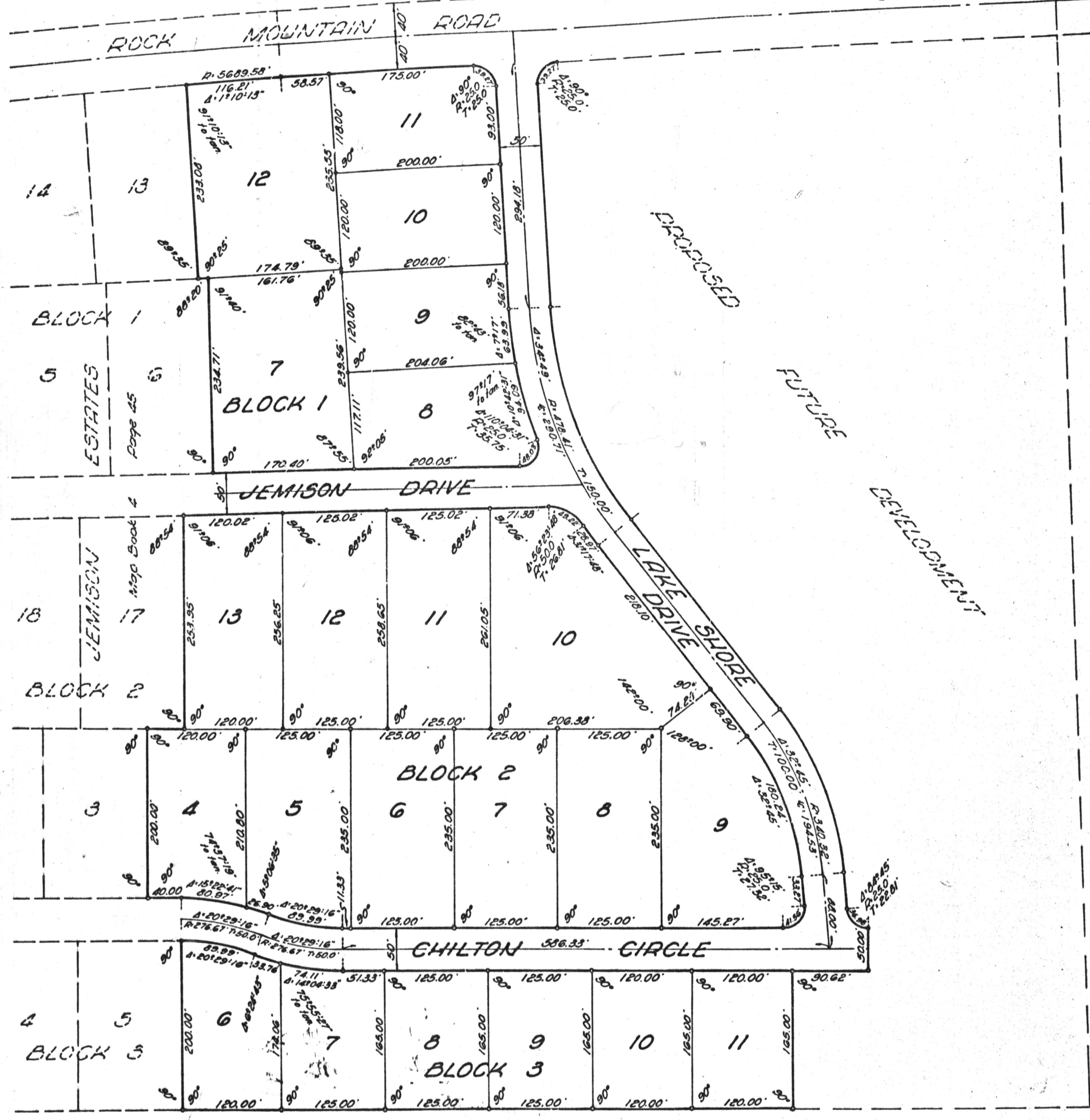


NE Corner of NW 1/4, NE 1/4
Section 23, T23N, R13E



**JEMISON ESTATES
FIRST ADDITION**
Sited in Section 23, Twp. 23 N., Rq. 13 E.
CHILTON COUNTY, ALABAMA
Scale: 1"=100' June, 1964
Shepard and Winters, Engineers

STATE OF ALABAMA:
CHILTON COUNTY:

We the undersigned, A. A. Winters, for Shepard and Winters, Engineers, as Surveyors, Jack Stephenson and L. E. Mason as President and Secretary-Treasurer, respectively, of Stephenson Enterprises, Inc., Owner, who hereby consent to the execution of this map, do hereby certify that the foregoing is a true and correct map or plat of Jemison Estates, First Addition, showing the number and dimensions of each lot and block, together with the width of each street, avenue and other public way and showing the relation of the land so platted to the government survey of Section 23, Township 23 North, Range 13 East, in Chilton County, Alabama, and that iron pipe markers have been set at each corner of all lots.

In witness whereof we have hereunto set our hands and seals this 16 day of July, 1964.

SHEPARD AND WINTERS, ENGINEERS

STEPHENSON ENTERPRISES, INC.
OWNER

by: A. A. Winters
A. A. Winters, Surveyor, Reg. No. 2586

by: Jack Stephenson
Jack Stephenson, President

attest: L. E. Mason
L. E. Mason, Secretary-Treasurer

STATE OF ALABAMA:
CHILTON COUNTY:

I, Betty A. Winters, a Notary Public in and for said County and State, hereby certify that A. A. Winters, Surveyor, and Jack Stephenson and L. E. Mason, President and Secretary-Treasurer, respectively, of Stephenson Enterprises, Inc. Owner, whose names are signed to the foregoing certificate, and who are known to me, acknowledged before me on this date that being informed of the contents of said certificate, they executed the same voluntarily and with full authority on the day the same bears date.

Given under my hand and seal this 16th day of July, 1964.

STATE OF ALABAMA CHILTON COUNTY
I hereby certify that the within agreement was filed in this office for record on July 17, 1964 and recorded in Book 4 page 67 and returned to J. C. White Judge of Probate

Betty A. Winters
Notary Public

Approved: _____
County Engineer