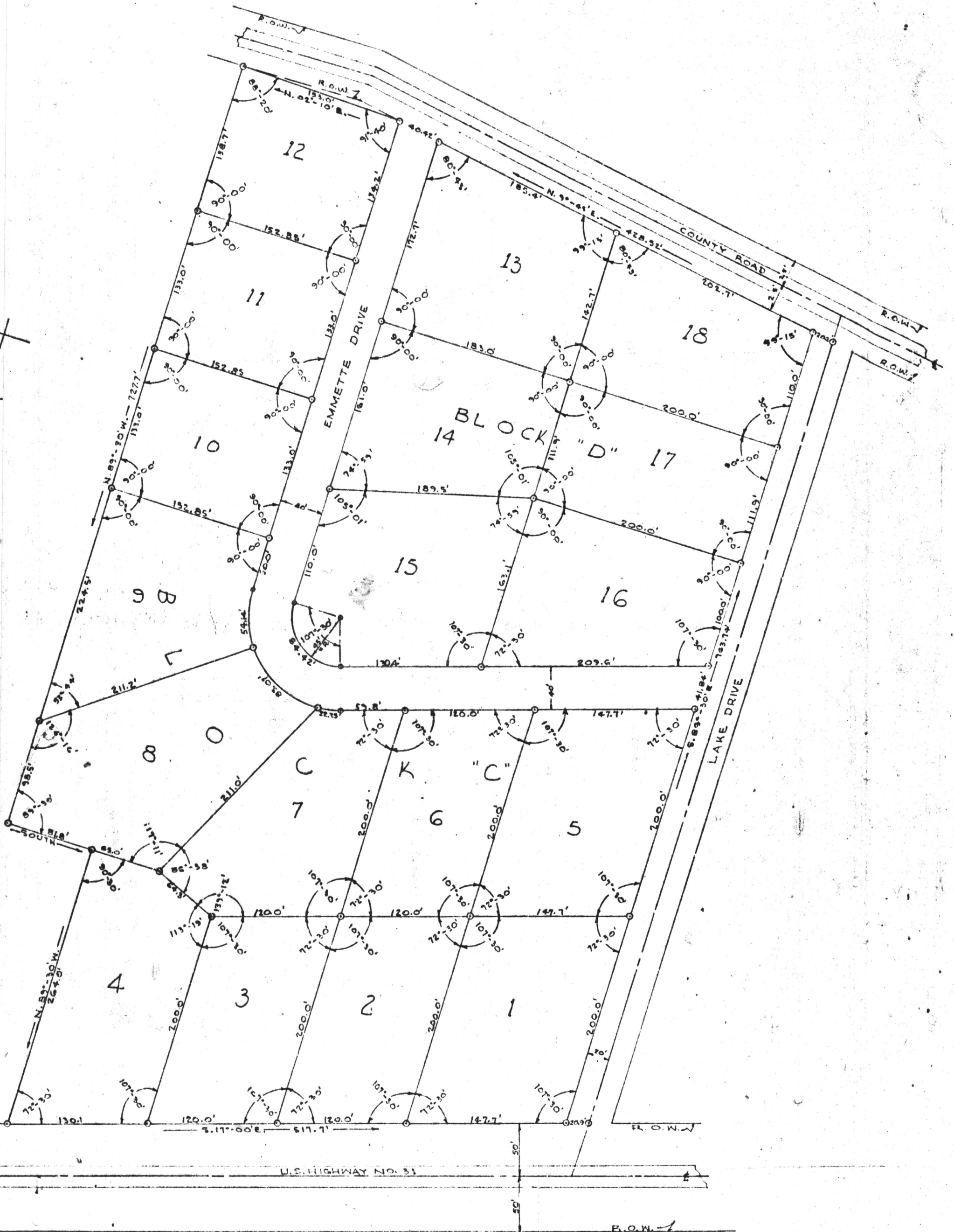


TOWNSHIP 23 NORTH---RANGE 13 EAST

# PINEVIEW HEIGHTS ADDITION

SCALE - 1" = 50'



STATE OF ALABAMA, CHILTON COUNTY.  
I hereby certify that the within survey was filed in my office for record on May 17 1965 at 9:55 AM and recorded in Book 4 page 77 and amounting to 5.0 Acres.  
W. L. G. Judge of Probate

## DESCRIPTION

BEGIN AT THE N.W. CORNER OF SECTION 14, T23N, R13E.; THENCE S. 89°-30' E. A DIST. OF 567 FT. TO A POINT ON THE EAST R.O.W. LINE OF U.S. 31; THENCE S. 11°-00' E. A DIST. OF 1334.5 FT. ALONG THE EAST R.O.W. OF U.S. 31 TO THE "POINT OF BEGINNING"; THENCE S. 17°-00' E. A DIST. OF 517.7 FT. ALONG THE EAST R.O.W. OF SAID U.S. 31 TO A CORNER; THENCE S. 89°-30' EAST A DIST. OF 763.76 FT. TO A CORNER ON THE WEST R.O.W. OF A COUNTY ROAD; THENCE N. 9°-45' E. A DIST. OF 428.52 FT. ALONG THE WEST R.O.W. OF SAID COUNTY ROAD TO A CORNER; THENCE N. 02°-10' E. A DIST. OF 153.0 FT. TO A CORNER ON THE SAID WEST R.O.W. OF COUNTY ROAD; THENCE N. 89°-30' W. A DIST. OF 727.7' TO A CORNER; THENCE SOUTH A DIST. OF 813.5 FT. TO A CORNER; THENCE N. 89°-30' W. A DIST. OF 264.6 FT. BACK TO THE "POINT OF BEGINNING". THIS DESCRIBING A TRACT OR PART OF LOT NO. 3 OF THE ELLA MAE C. THOMPSON ESTATE IN SECTION 14, T23N., R13E. AS SAME APPEARS OF RECORD IN BOOK NO. 512 AT PAGE NO. 305 IN THE OFFICE OF THE JUDGE OF PROBATE, CHILTON COUNTY, ALABAMA.

I, CLURIN B. REED, JR., A REGISTERED LAND SURVEYOR, DO HEREBY CERTIFY THAT THIS IS A TRUE AND CORRECT MAP OF THE PROPERTY SHOWN AND DESCRIBED ABOVE ACCORDING TO MY SURVEY THIS THE 17TH DAY OF MAY, 1965.

*Clurin B. Reed, Jr.*  
CLURIN B. REED, JR., REG. NO. 1584