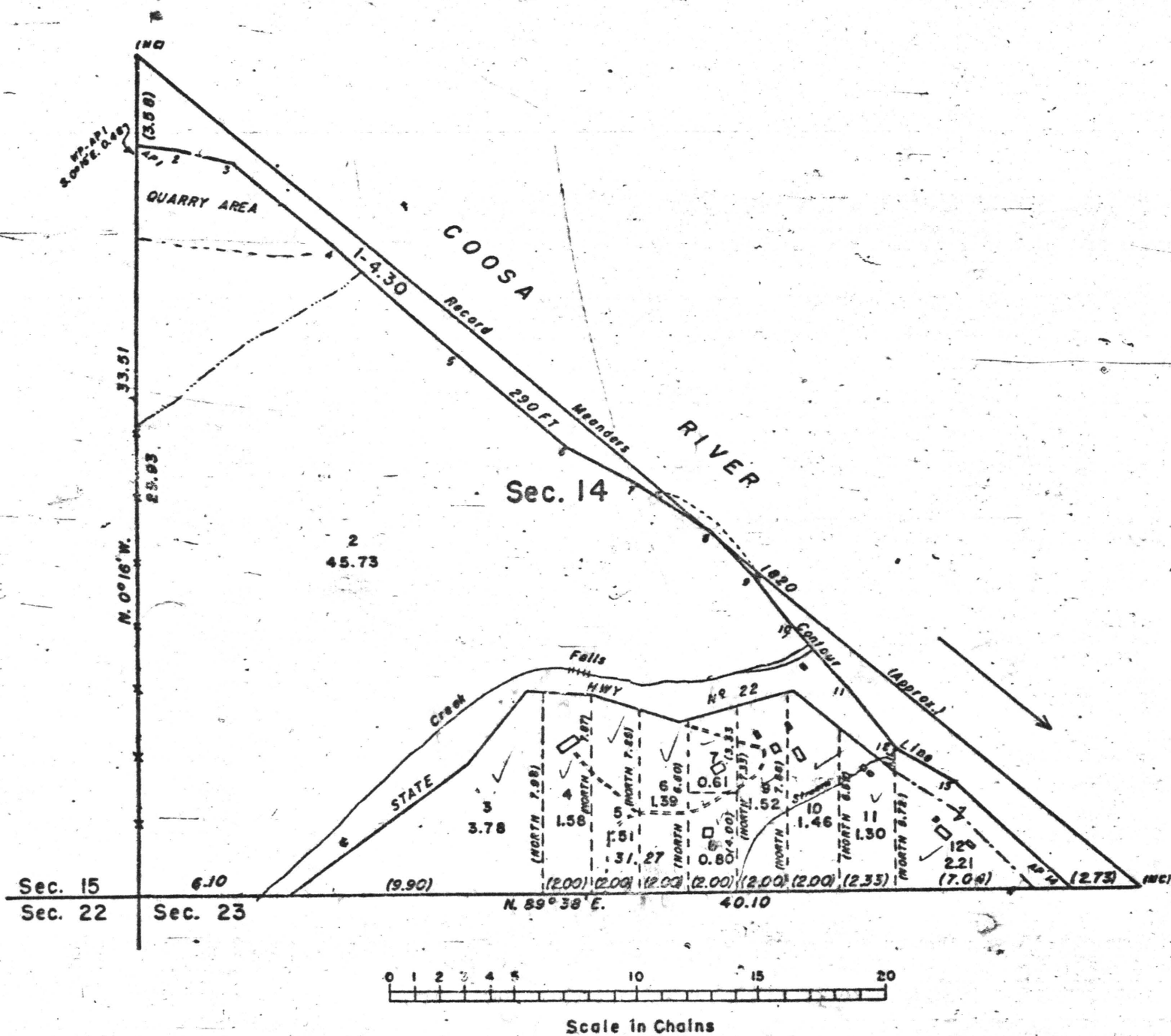


TOWNSHIP 21 NORTH, RANGE 16 EAST OF THE ST. STEPHENS MERIDIAN, ALABAMA
 DEPENDENT RESURVEY AND SUBDIVISION OF SECTION 14 (W. OF COOSA R.)



This plat represents the dependent resurvey and subdivision of fractional section 14 as shown upon the undated plat for T. 21 N., R. 16 E., (west of Coosa River) of the survey executed by Benjamin Harris, Deputy Surveyor, in 1820. Under Power Site Classification No. 7, Alabama No. 1, approved July 30, 1921, (FPC Project 82), fractional section 14 was reserved for power purposes. So much of the section as is situated above the 290-foot contour line (project datum), is being relinquished from the reservation, while that portion below said line is being continued therein. This 290-foot contour line has been located, marked and monumented as represented by the irregular line along the Coosa River between the points designated as AP 1 to AP 14, inclusive.

So much of the section lying south of State Highway No. 22 has been subdivided by protraction to provide descriptions for Small Tract purposes.

Surveyed by Norville E. Shearer, Cartographer (Cadastral), from March 28 to April 4, 1956, under Special Instructions for Group 28, dated February 1, 1956.

UNITED STATES DEPARTMENT OF THE INTERIOR
 BUREAU OF LAND MANAGEMENT
 Washington, D. C. November 5, 1956

This plat is strictly conformable to the approved field notes, and the survey, having been correctly executed in accordance with the requirements of law and the regulations of this Bureau, is hereby accepted.

For the Director

Earl G. Harrington

Cadastral Engineering Staff Officer