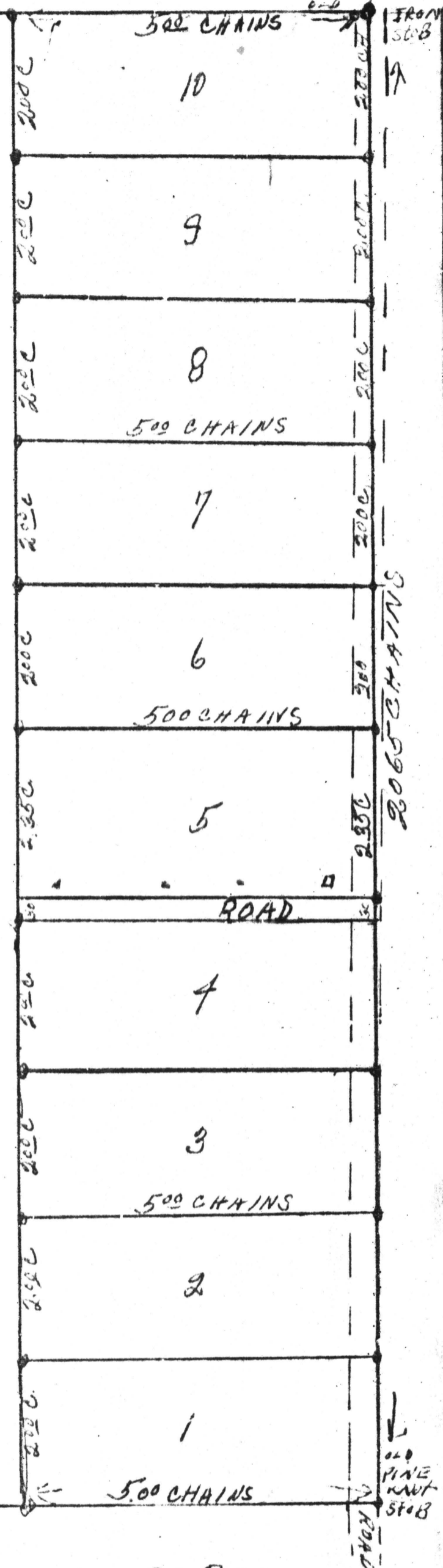


NW 1/4 SEC 19
T21R12

NW 1/4 OF NW 1/4

STATE OF ALABAMA, CHILTON COUNTY.

I hereby certify that the within conveyance was filed
in this office for record 12-22 1963
at 1 o'clock P M. and recorded in
Record 4 page 97 and assigned
Fees \$ _____ Judge of Probate



MAP SHOWING PORTION OF THE NW 1/4 OF NW 1/4 SECTION 19 T.21R.12
DIVIDED INTO 10 ACRE LOTS LESS RIGHT OF WAY OF ROAD ON EAST
END OF SAID LOTS, LOTS ARE 200 CHAINS NORTH AND SOUTH & 500 N
CHAINS EAST AND WEST LESS WHAT IS IN ROAD SAID LOTS WERE SURVEYED
AT THE REQUEST OF JAMES ERVIN. BY C. B. REED A REGISTERED LAND SUR-
VEYOR, REGISTRATION NO 320. SURVEYED AND PLATTED THIS
THE 5TH DAY OF NOVEMBER 1963

SIGNED BY C. B. Reed

SCALE 1" = 200 CHAINS