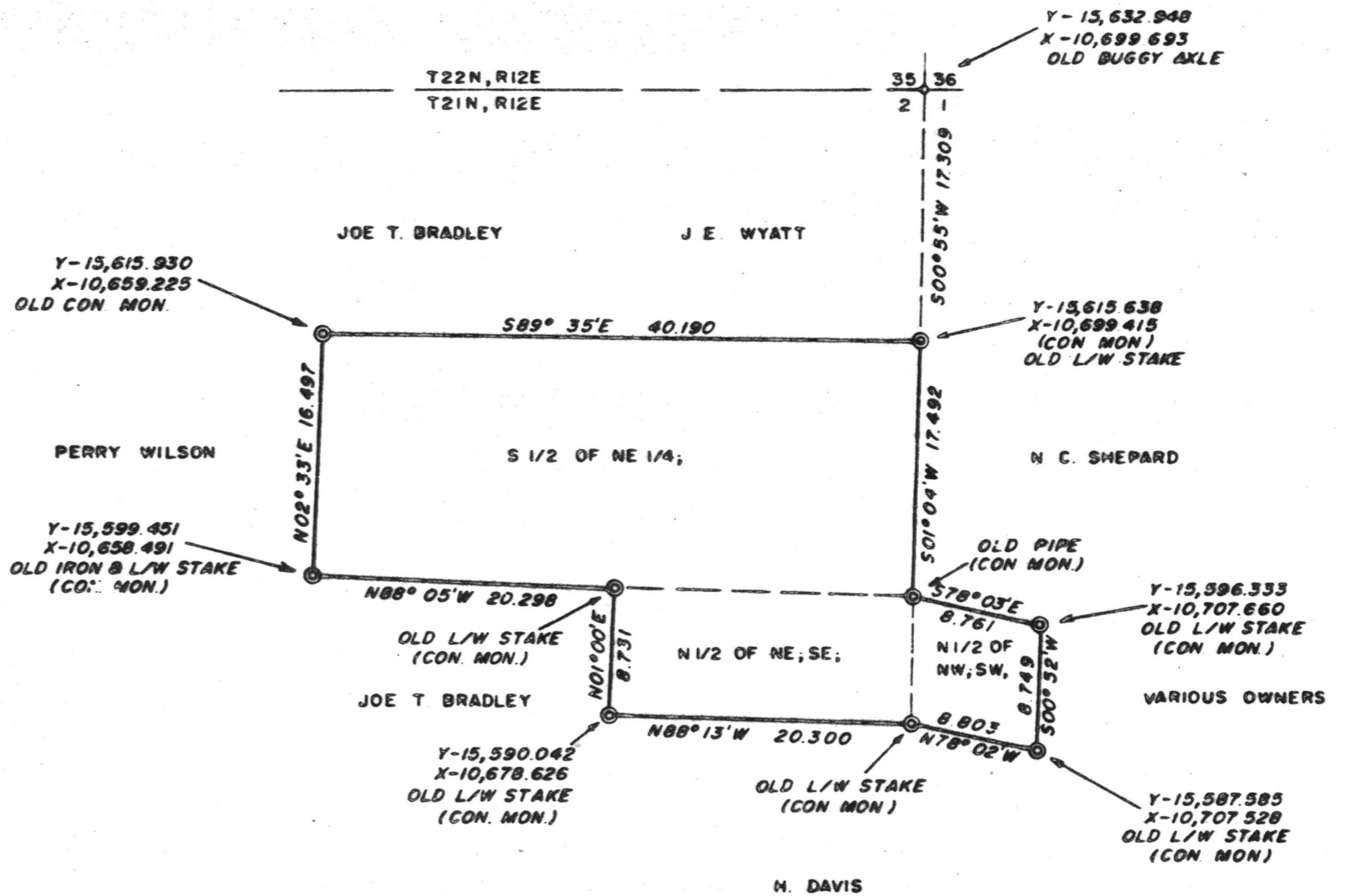




X-10,650



SCALE: 1 INCH = 10 CHAINS

THIS PLAT REPRESENTS A TRANSIT SURVEY OF 93.99 ACRES OF LAND OWNED BY JOE W. AND MARIE IVY GRAHAM AND BEING THE SOUTH HALF OF THE NORTHEAST QUARTER AND THE NORTH HALF OF THE NORTHEAST QUARTER OF THE SOUTH-EAST QUARTER OF SECTION 2, THE NORTH HALF OF THE NORTHWEST QUARTER OF THE SOUTHWEST QUARTER OF FRACTIONAL SECTION 1, ALL IN TOWNSHIP 21 NORTH, RANGE 12 EAST, CHILTON COUNTY, ALABAMA WITH SUCH GRID BEARINGS, GRID COORDINATES, DISTANCES, BOUNDS AND CONTROLS AS FIXED AND DETERMINED BY THE ALABAMA COORDINATE SYSTEM, WEST ZONE, AS SHOWN ON PLAT.

SURVEYED APRIL 6, 1967
CERTIFIED AND APPROVED

J. Dean Gowen
J. DEAN GOWEN FOLKSTON, GA.

ALABAMA SURVEYORS CERT NO. 6258



Map Book Page 100

STATE OF ALABAMA, CHILTON COUNTY
I hereby certify that the within conveyance was filed
in this office for record on 5-2 1967
at 9 o'clock A.M. and recorded in
Record and examined
by J. L. Hays
Judge of Probate

FB 46

PHONES & NONPARELS 6 12 18 24 30 36

PHONE 822-3122

ROBERTS & SON, INC. P. O. BOX 1387

PRINTERS — BOOKBINDERS — LITHOGRAPHERS BIRMINGHAM, ALABAMA

MICROFILMING AND MICRO REPRODUCTIONS

1 2 3 4 5 6

Y-15,550

A-2116

W.B.S.