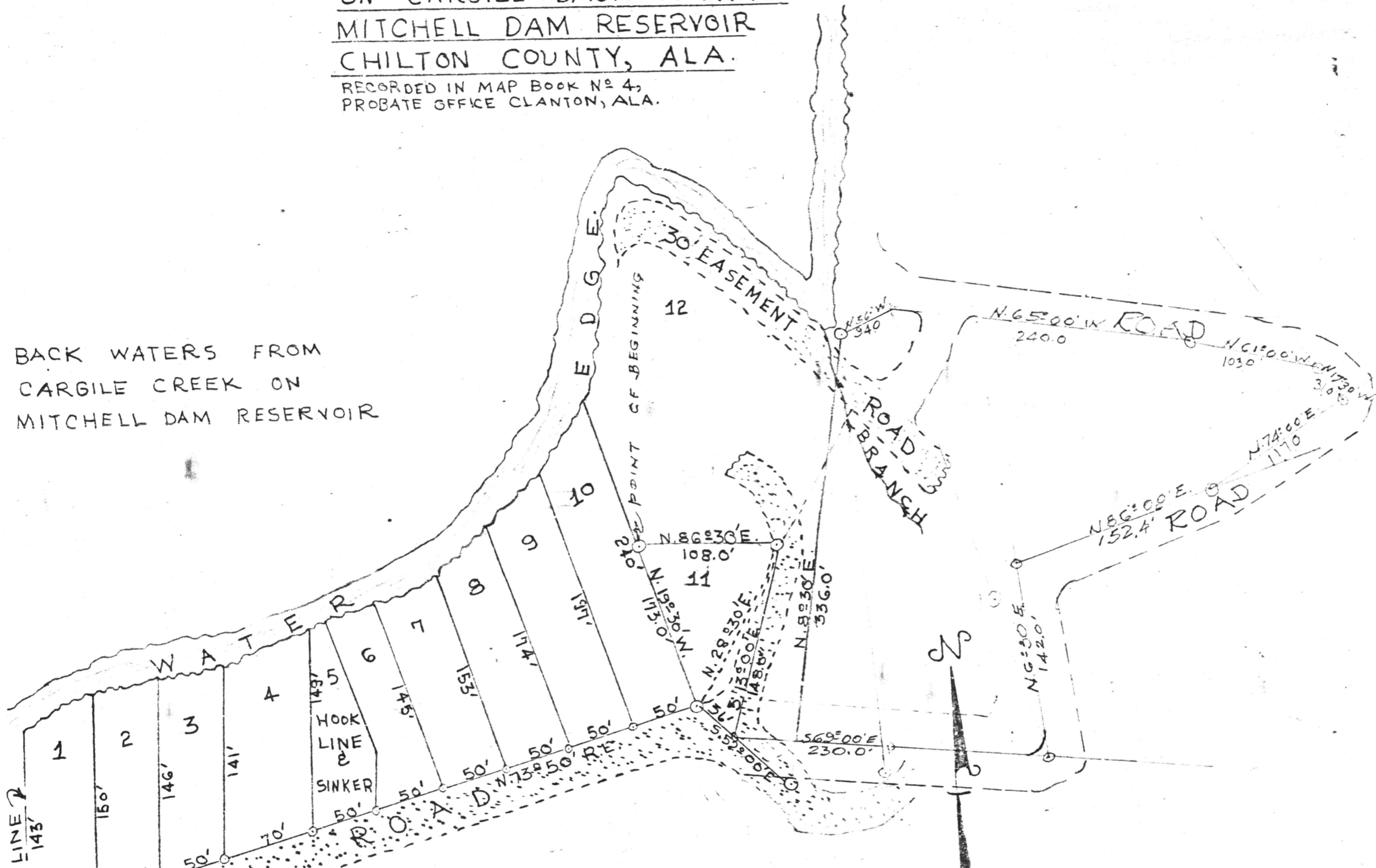


RE-SURVEY
OF
THE CAFFEE SURVEY
DIXIE FISHING CAMP
ON CARGILE BACK WATERS
MITCHELL DAM RESERVOIR
CHILTON COUNTY, ALA.

RECORDED IN MAP BOOK No 4,
 PROBATE OFFICE CLANTON, ALA.

BACK WATERS FROM
 CARGILE CREEK ON
 MITCHELL DAM RESERVOIR



S.E. 1/4 OF THE S.W. 1/4
 SECTION 5 TP. 21N-R. 16E.

HEADLEY ENGINEERING CO.
 BY: *H.R. Headley*
 H.R. HEADLEY ALA. REG. No 115

STATE OF ALA. CHILTON CO.
 I CERTIFY THIS
 INSTRUMENT WAS FILED
 1967 MAY 29 PM 3:37
 J.C.C. FILE NUMBER OR
 RECORD PAGE AS SHOWN ABOVE
Charles D. Thomas
 JUDGE OF PROBATE
 57-00

SCALE: 1" = 60'

PAID

S.W. CORNER
 S.E. 1/4, S.W. 1/4
 SEC. 5, TP. 21N-R. 16E.

SECTION 11E 7

*At Charles D. Longford, Atty
 131 1/2 Monroe St
 Montg, Ala*