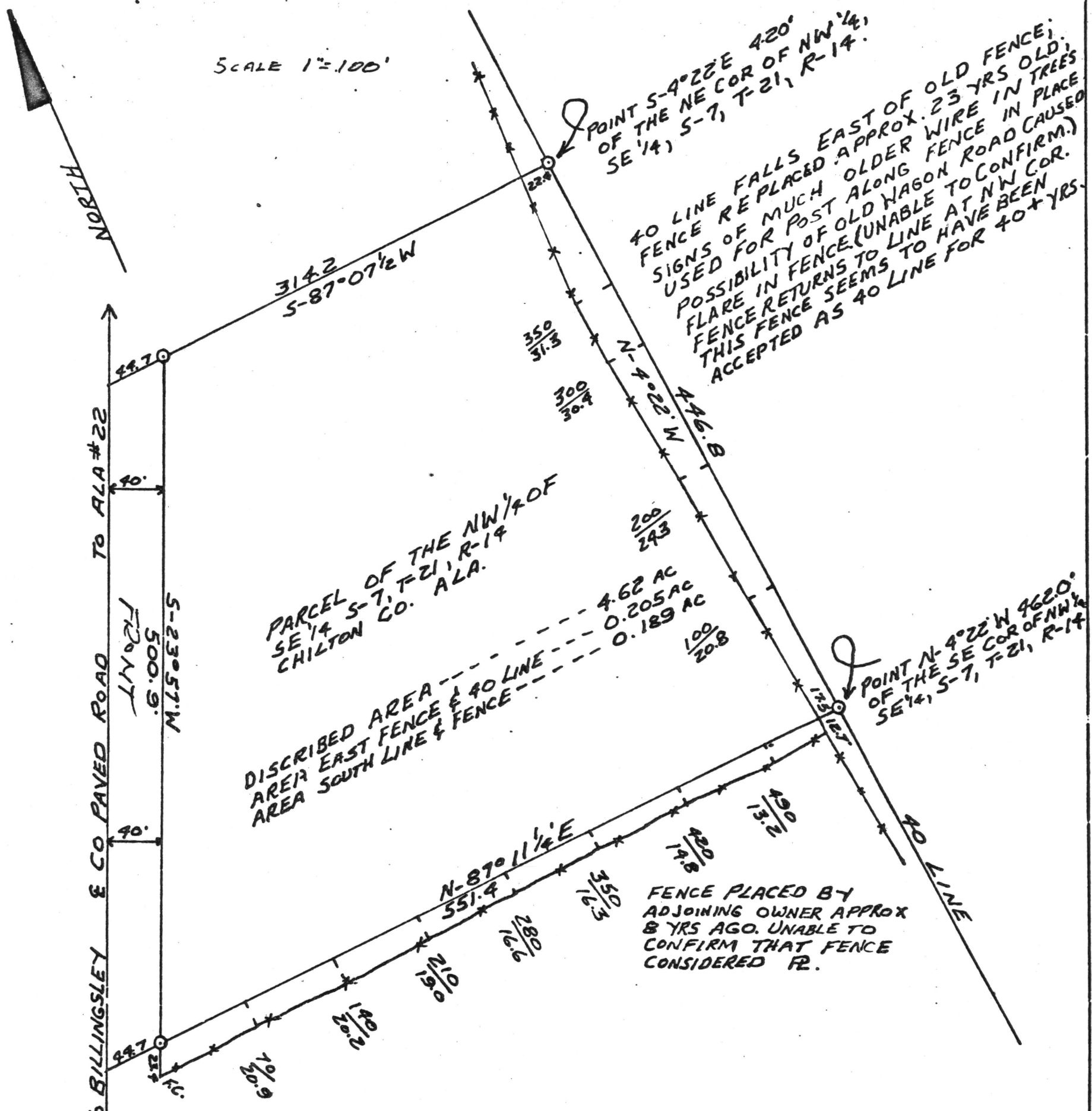


SCALE 1"=100'



I, HAROLD W. WILSON, A REGISTERED SURVEYOR IN THE STATE OF ALABAMA, HEREBY CERTIFY THIS TO BE A TRUE AND CORRECT PLAT OF LANDS OF MRS E. S. "MARTHA" CHASTEEN LOCATED IN THE NW 1/4 OF THE SE 1/4 OF S-7, T-21, R-14 CHILTON COUNTY, ALABAMA.

DESCRIPTION

START AT A POINT 420' S-4°22'E OF THE NE COR OF THE NW 1/4 OF THE SE 1/4 OF S-7, T-21, R-14; THENCE S-87°07'1/2" W 314.2' TO THE EAST R.O.W. OF PAVED ROAD; THENCE ALONG R.O.W. S-23°57' W 500.9'; THENCE N-87°11'1/4" E 551.4' TO A POINT N-4°22' W 462.0' OF SE COR OF THE NW 1/4 OF THE SE 1/4; THENCE ALONG THE 40 LINE N-4°22' W 446.8' TO THE STARTING POINT.

Harold W. Wilson
 HAROLD W. WILSON
 LS # 6853