

CITY OF CLANTON ALA.

HIGGINS FERRY ROAD  
CLANTON

CONCORD SCHOOL

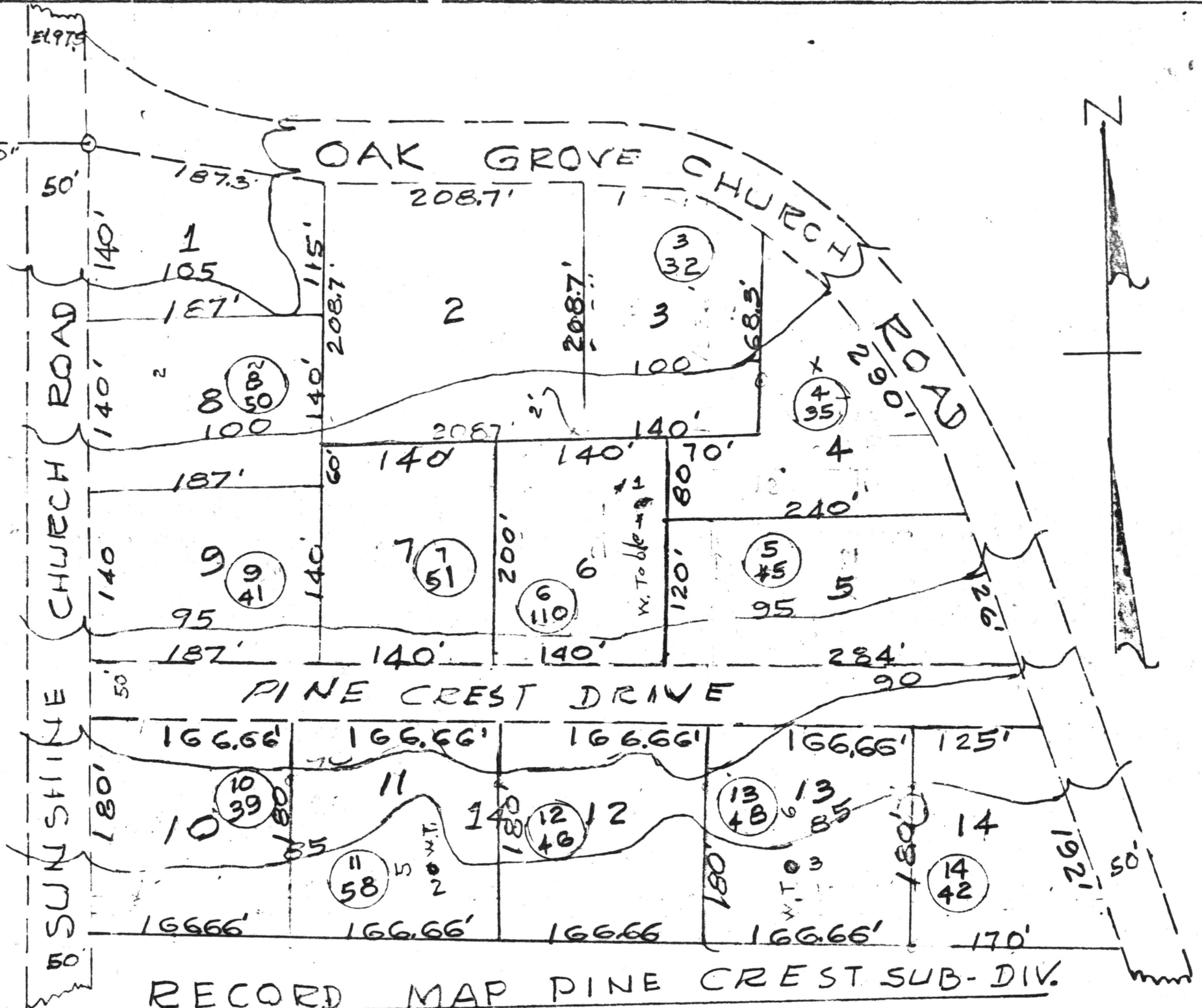
ROBINSON STORE

SUNSHINE CHURCH ROAD

RAK GROVE ROAD  
PINE CREST SUB-DIV.

N.W. CORNER S.E. 1/4 S.E. 1/4 SECTION 33 TP 22 R 15 E 7

EAST 154.0'



VICINITY MAP

RECORD MAP PINE CREST SUB-DIV.  
 OAK GROVE & SUNSHINE CHURCH ROADS  
 5-MILES E. OF CLANTON, ALA.  
 OCT. 10, 1970 SCALE: 1/4"=100'

SURVEYORS CERTIFICATE  
 STATE OF ALABAMA  
 CHILTON COUNTY

I, E.H. MacMillan, the undersigned do hereby certify that I am a Professional Land Surveyor and that the annexed map of the Pine Crest Sub-Division consisting of 2 sheets correctly represents a survey made under my supervision on the 10th day of Oct., 1970. All the monuments shown hereon exist and their positions are correctly shown.

SCALE 1/4"=100'

OWNERS  
 Mauris E. Mims  
 Effie Mae Mims

PERCOLATION TEST  
 LEGEND

NO TEST

NO MINUTES PER 1" DROP

STATE OF ALA. CHILTON CO.  
 I CERTIFY THIS INSTRUMENT WAS FILED

1971 JUN 17 AM 8:24 WATER BORING.

U.C.C. FILE NUMBER OR BK. & PAGE AS SHOWN ABOVE  
 E. H. Smith  
 JUDGE OF PROBATE

Approved: Chilton Co. Health Dept.

By: C. L. Day Jr. Sanitarian

E. H. MacMillan

E.H. MacMillan  
 Ala. Reg. No. 3833

E.H.