



NORTH
1320'

SE 1/4 - SW 1/4
SECT. 14 - TWP. 21 - R. 16
CHILTON Co. ALA.

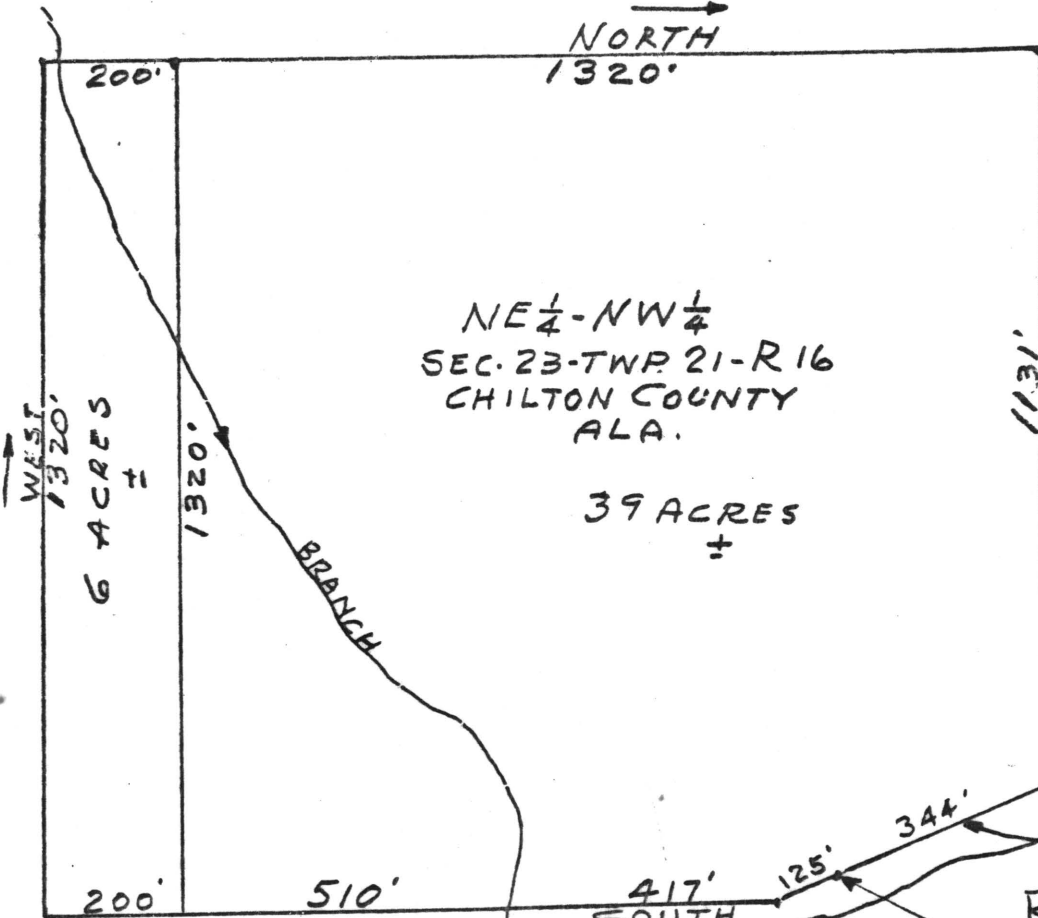
NE 1/4 - NW 1/4
SECT. 23 - TWP. 21 - R. 16
CHILTON COUNTY
ALA.

(PROPERTY OF
U.S. GOVERNMENT)

39 ACRES
±

1131'
EAST

CORNER & LINE
ESTABLISHED BY
U.S. GOV'T SURVEYOR
APRIL 1956



ON 290' FL. LINE

RIVER

IRON PIPE ON 290'
FLOOD LINE - A.P. CO.

PROPERTY OF
JOE SMITH
CHILTON COUNTY
ALABAMA.
1956

Samuel D. Brown E+L.S.
ALA. REG. NO. 1047
CLANTON, ALA.

45 ACRES

STATE OF ALA. CHILTON CO.
I CERTIFY THIS
IS CORRECT

1972 APR 11 PM 10:27

W.S.C. FILE NUMBER OR
OF SK. & PAGE AS SHOWN

Samuel D. Brown
JULY 1956