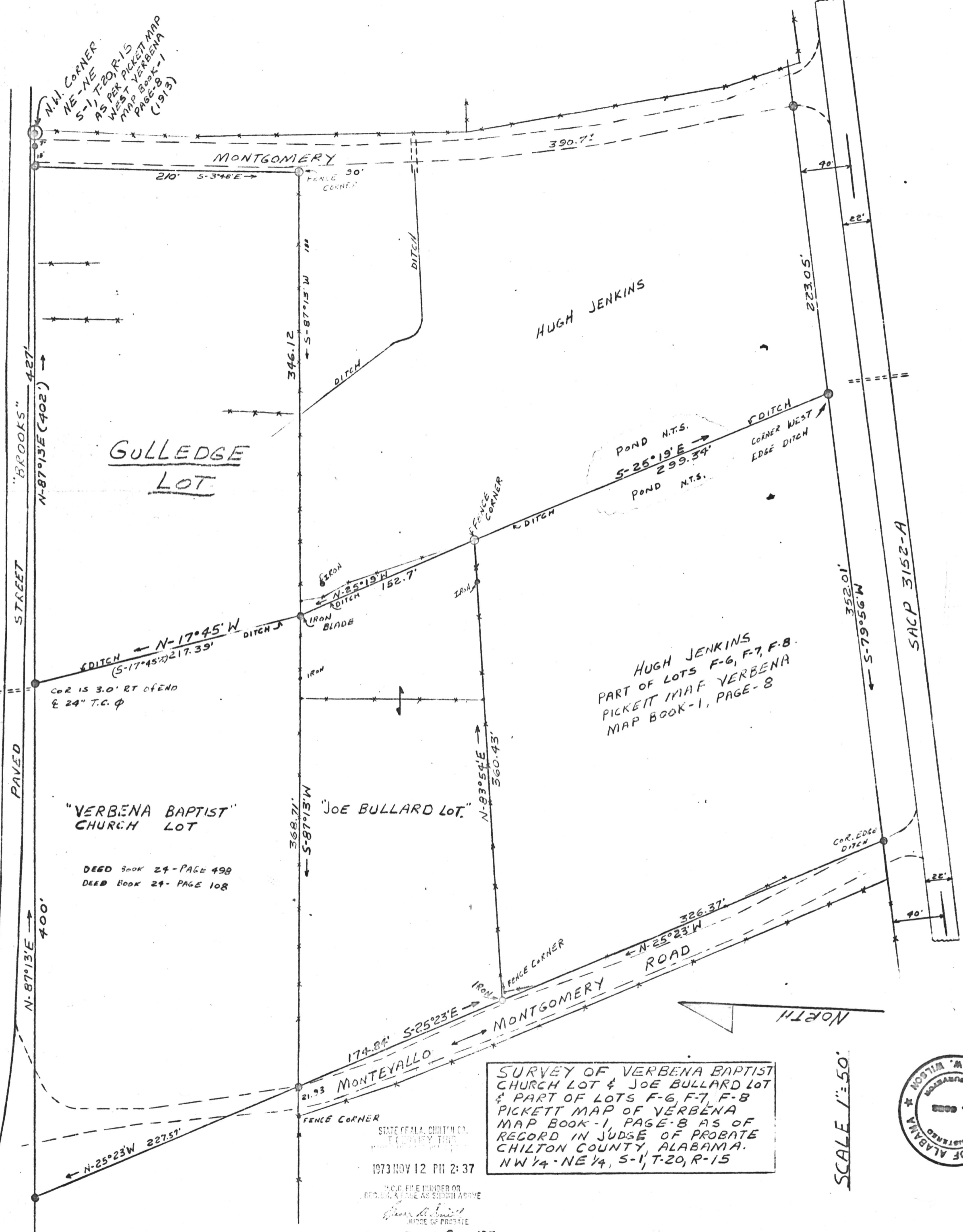


N.W. CORNER  
NE-NE  
S-1, T-20, R-15  
AS PER PICKETT MAP  
WEST VERBENA  
MAP BOOK-1  
PAGE-8  
(1913)



**GULLEDGE LOT**

**"VERBENA BAPTIST CHURCH LOT"**

DEED BOOK 24 - PAGE 498  
DEED BOOK 24 - PAGE 108

**"JOE BULLARD LOT"**

HUGH JENKINS

HUGH JENKINS  
PART OF LOTS F-6, F-7, F-8  
PICKETT MAP VERBENA  
MAP BOOK-1, PAGE-8

SURVEY OF VERBENA BAPTIST CHURCH LOT & JOE BULLARD LOT & PART OF LOTS F-6, F-7, F-8 PICKETT MAP OF VERBENA MAP BOOK-1, PAGE-8 AS OF RECORD IN JUDGE OF PROBATE CHILTON COUNTY, ALABAMA. NW 1/4 - NE 1/4, S-1, T-20, R-15

STATE OF ALA. CHILTON CO.  
JUDGE OF PROBATE  
1973 NOV 12 PII 2:37  
M.C.C. FILE NUMBER OR  
REC. NO. & PAGE AS SHOWN ABOVE  
JUDGE OF PROBATE  
Map B+4 Page 177

SCALE 1"=50'

