

**"SURVEY OF GULLEDGE PROPERTY"**

I HAROLD W. WILSON, A DUTY REGISTERED LAND SURVEYOR DO HEREBY CERTIFY THIS TO BE A TRUE AND CORRECT MAP OF THE FOLLOWING DESCRIBED PARCELS OF LAND AS SURVEY BY ME.

*Harold W. Wilson*  
 WITNESSE MY HAND THIS 7TH DAY OF SEPTEMBER, 1973

**"DESCRIPTION"**

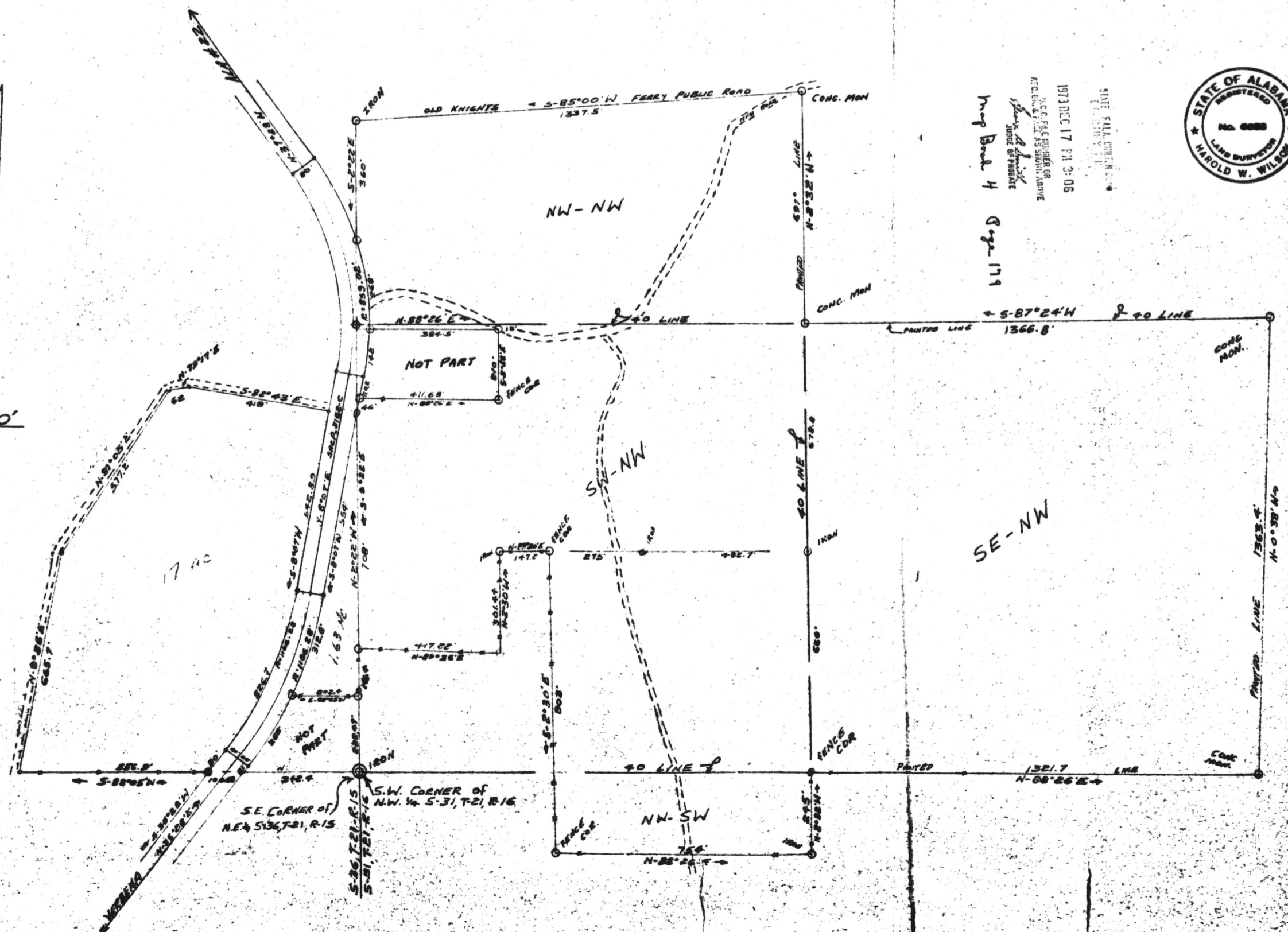
**PARCEL-ONE:** START AT THE S.W. CORNER OF THE N.W. 1/4 S-31 T-21 R-16; THENCE N-2°22'W (222.9) FEET TO THE POINT OF BEGINNING; THENCE FROM SAID POINT OF BEGINNING CONTINUE N-2°22'W (141.9) FEET; THENCE N-89°36'E (417.22) FEET; THENCE N-2°30'W (301.44) FEET; THENCE N-88°30'E (147.2) FEET; THENCE S-2°30'E (903) FEET; THENCE N-88°26'E (754) FEET; THENCE N-2°32'W (245) FEET; THENCE N-88°26'E (1321.7) FEET; THENCE N-0°38'W (1363.9) FEET; THENCE S-87°24'W (1366.8) FEET; THENCE N-2°32'W (697) FEET; THENCE S-85°00'W ALONG OLD ROADBED (1337.5) FEET; THENCE S-2°22'E (360) FEET TO A POINT ON THE EAST R.O.W. LINE OF A COUNTY PAVED ROAD (SACP-3152-C); THENCE ON AND ALONG SAID EAST R.O.W. LINE WITH A CURVE TO THE RIGHT HAVING A RADIUS OF 859.02 FEET FOR A DISTANCE OF (268) FEET; THENCE N-88°26'E (384.5) FEET; THENCE S-2°22'E (210) FEET; THENCE S-88°26'W (411.63) FEET BACK TO SAID EAST R.O.W. LINE; THENCE ON AND ALONG SAID EAST R.O.W. LINE S-8°07'W (600) FEET; THENCE CONTINUE ON AND ALONG SAID EAST R.O.W. LINE WITH A CURVE TO THE RIGHT HAVING A RADIUS OF 118628 FEET A DISTANCE OF (312.8) FEET; THENCE N-88°05'E (802.4) FEET BACK TO THE POINT OF BEGINNING. LYING AND BEING SITUATED IN THE N.W. 1/4 AND THE S.W. 1/4 OF S-31, T-21, R-16 AND THE S.E. 1/4 OF N.E. 1/4 S-36, T-21, R-15, CHILTON COUNTY, ALABAMA. CONTAINING (58.7) ACRES MORE OR LESS.



STATE OF ALABAMA  
 REGISTERED  
 LAND SURVEYOR  
 HAROLD W. WILSON  
 No. 6888  
 1973 DEC 17 PM 3:06  
 U.S.G.P.S. REGISTERED OR  
 RECORDED AS SHOWN, MAPS  
 AND PLANS  
 Harold W. Wilson  
 Land Surveyor  
 Map Book 4 Page 171

**"DESCRIPTION"**

**PARCEL-TWO:** START AT THE S.E. CORNER OF N.E. 1/4 S-36, T-21, R-15; THENCE S-88°05'W (443.08) FEET TO THE WEST R.O.W. LINE OF A COUNTY PAVED ROAD (SACP-3152-C) AND THE POINT OF BEGINNING; THENCE FROM SAID POINT OF BEGINNING CONTINUE S-88°05'W (556.9) FEET; THENCE N-9°35'E (655.7) FEET; THENCE N-31°05'E (572.2) FEET; THENCE N-19°17'E (62) FEET; THENCE S-82°43'E (419) FEET TO THE WEST R.O.W. LINE OF SAID PAVED ROAD; THENCE ON AND ALONG SAID WEST R.O.W. LINE S-8°07'W (342.8) FEET; THENCE CONTINUE ON AND ALONG SAID WEST R.O.W. LINE WITH A CURVE TO THE RIGHT HAVING A RADIUS OF 110628 FEET A DISTANCE OF (526.7) FEET; THENCE CONTINUE ON AND ALONG SAID WEST R.O.W. LINE S-35°28'W (80) FEET BACK TO THE POINT OF BEGINNING. LYING AND BEING SITUATED IN THE S.E. 1/4 OF THE N.E. 1/4 S-36, T-21, R-15, CHILTON COUNTY, ALABAMA. CONTAINING (7) ACRES MORE OR LESS.



SCALE 1" = 200'

