

FLOOR PLAN
SCALE: 1/8" = 1'-0"

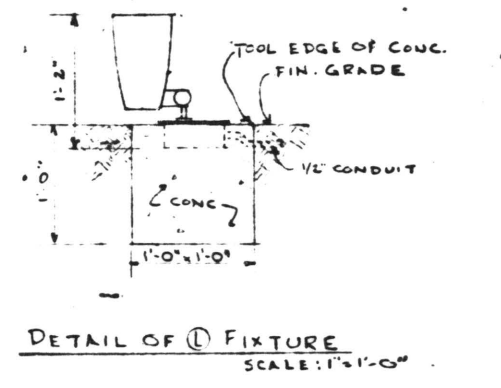
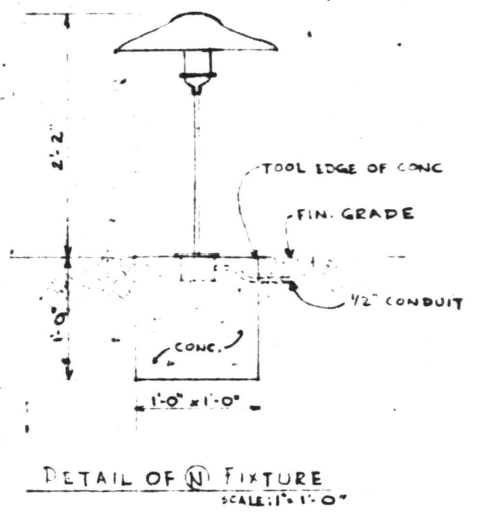
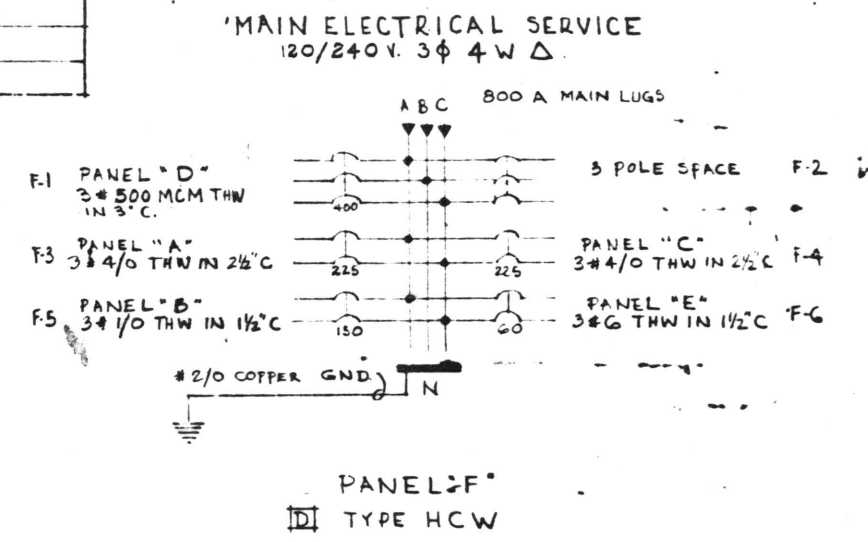
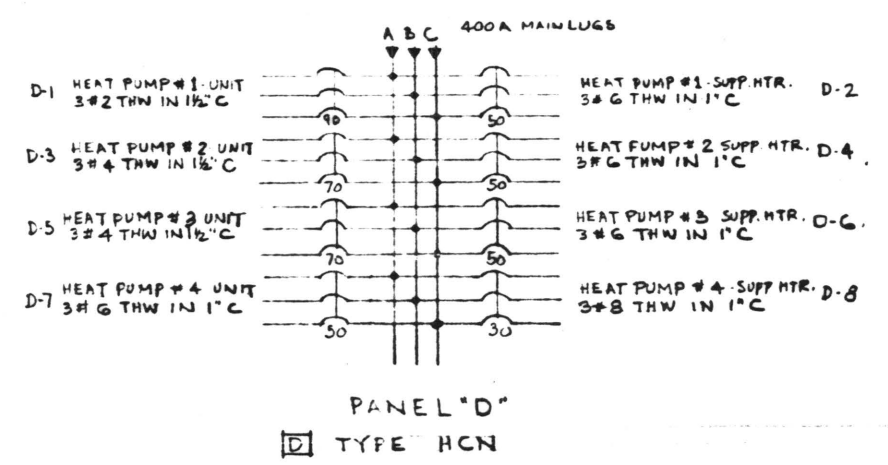
LIGHT FIXTURE SCHEDULE

SYMBOL	MANUFACTURER	CATALOG #	LAMPS	MOUNTING	REMARKS
(A)	WESTINGHOUSE	FD2-SG-4424-C70	4-F40	RECESSED	LAY-IN
(B)	WESTINGHOUSE	FD2-SG-2022-C70	2-U40	RECESSED	LAY-IN
(C)	WESTINGHOUSE	FD2-SG-244-C70	2-F40	RECESSED	LAY-IN
(D)	ART METAL	20-3511 WS	1-200W	RECESSED	
(E)	ALLCO	435	2-30/R3	SURFACE	WHEEL CABINET
(F)	ALLCO	445	2-40/R3	SURFACE	UNDER CABINET
(G)	HOLOPHANE	420	1-200W	OUTLET BOX	BRACKET
(H)	LIGHTOLIER	TRGE-42" W/80" CRYSTAL BLOCK	R30 75W	CLG OUTLET BOX	
(K)	DAY-BRITE	W300-B031	1-150W 2-25 SPOT 100W-MV R35 SPOT	RECESSED	ADJ. SPOT
(L)	KIM LIGHTING INC.	EL-G7 MV		SEE DETAIL	SEE SITE PLAN FOR LOCATION
(M)	KIM LIGHTING INC.	EL-28	150W/PAR 38		MOUNT IN TREES AS DISPLAYED. PROVIDE #2-26 TREE MOUNT
(N)	KIM LIGHTING INC.	#EL-96W	100W/A21	J-2 JUNCTION BOX	SEE DETAIL

SEE SITE PLAN FOR LAY-OUT OF YARD LIGHTING

ELECTRICAL LEGEND

SYMBOL	DESCRIPTION
(Circle with dot)	OUTLET BOX
(Circle with vertical line)	WALL SWITCH - SINGLE POLE OR 3-WAY - SIERRA # 5021X - 53" UP
(Circle with horizontal line)	DUPLEX RECEPTACLE - SIERRA # 1400X - 18" UP UNLESS NOTED
(Circle with diagonal line)	DRYER OUTLET - SIERRA # 2530/S-724N - 36" UP
(Circle with horizontal line and vertical bar)	RANGE OUTLET - SIERRA # 2550/S-730N - 6" UP
(Circle with vertical line and horizontal bar)	CLOCK OUTLET - SIERRA # 2123 - 7'-9" ABOVE FLOOR
(Circle with vertical line and horizontal bar)	THERMOSTAT (HEAT PUMPS) 60" UP
(Circle with vertical line and horizontal bar)	TELEPHONE OUTLET - WALL - 18" UP UNLESS NOTED
(Circle with vertical line and horizontal bar)	DUPLEX RECEPTACLE - FLOOR - WALKER # 513AL-DPS-4 (ON UNDER FLOOR DUCT SYSTEM)
(Circle with vertical line and horizontal bar)	TELEPHONE OUTLET - FLOOR - WALKER # 501AL (ON UNDER FLOOR DUCT SYSTEM)
(Circle with vertical line and horizontal bar)	JUNCTION BOX WITH FLEXIBLE CONNECTION TO EQUIP. IF REQ'D.
(Circle with vertical line and horizontal bar)	TIME SWITCH - TORK # 7200 Z
(Circle with vertical line and horizontal bar)	PANEL BOARD
(Circle with vertical line and horizontal bar)	SAFETY SWITCH - HD-RT - FUSIBLE FOR HEAT PUMPS
(Circle with vertical line and horizontal bar)	UNDER FLOOR DUCT SYSTEM - WALKER # 222-S SYSTEM
(Solid line)	CONDUIT RUNS ABOVE FLOOR
(Dashed line)	CONDUIT RUNS IN FLOOR SLAB OR UNDERGROUND



ALABAMA POWER COMPANY	
JOB CLANTON DISTRICT OFFICE	
DETAIL LIGHTING LAY-OUT, SCHEDULES	
SCALE 1/8" = 1'-0"	D/W
SHEET 5 OF 7 SHEETS	C-194689
SUPERSEDES	

DRAWN WALL	CHECKED WALL	TRACED	DATE 23 NOV. 73
APPROVED <i>[Signature]</i>		DATE 31 OCT. 73	
APPROVED		DATE	