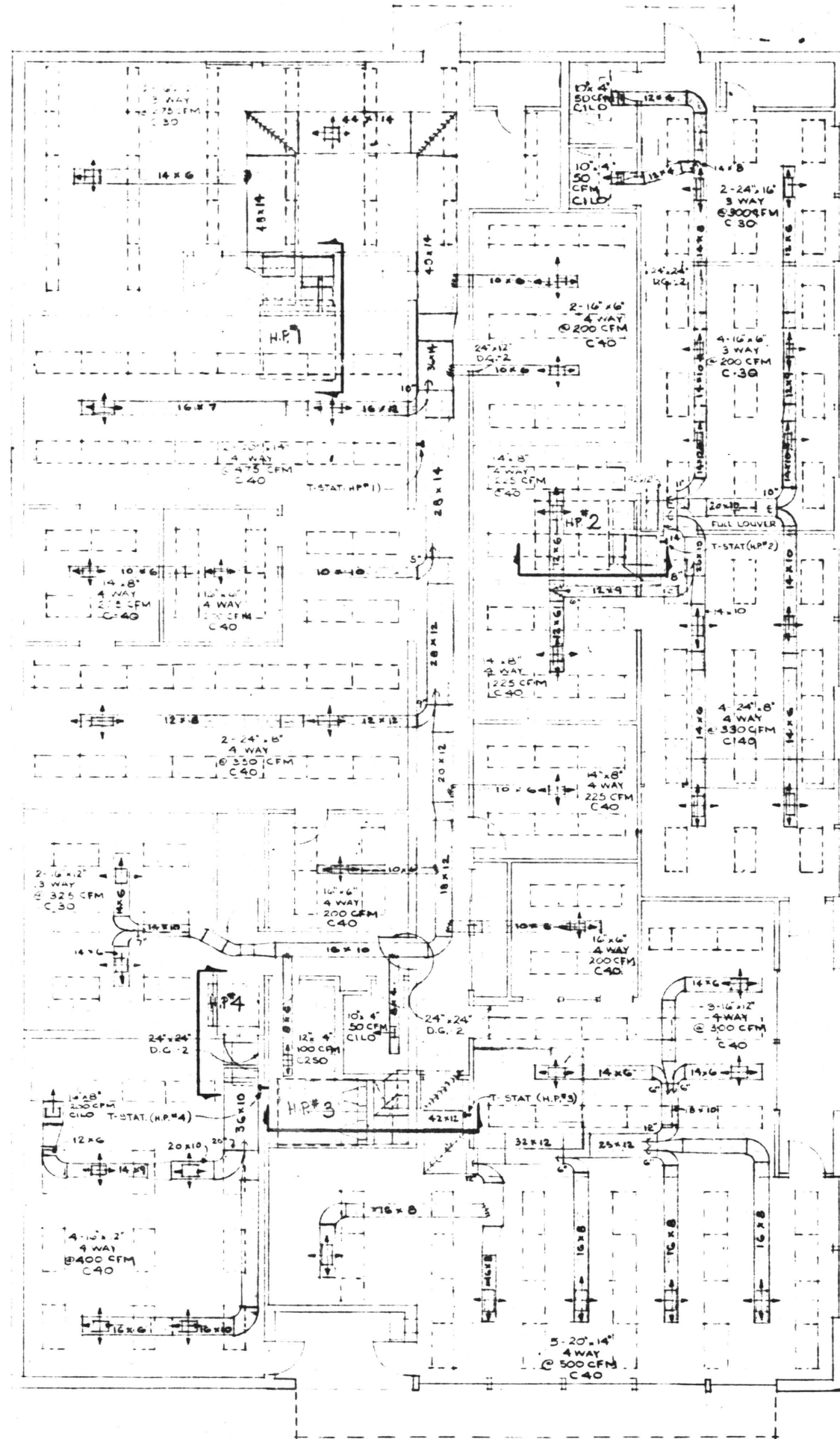
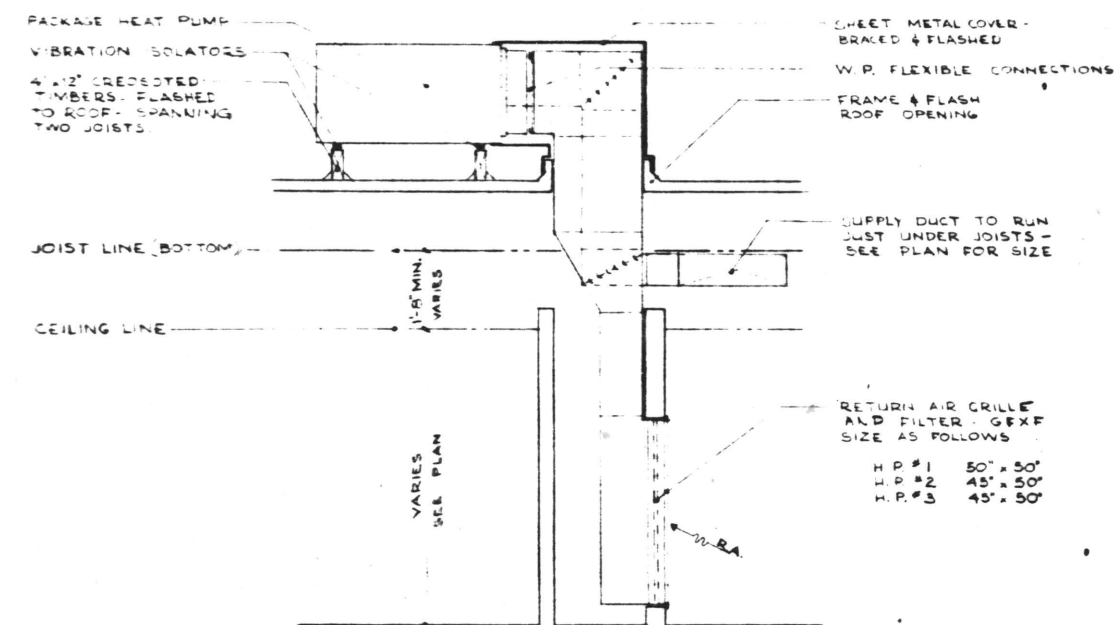


**NOTES**

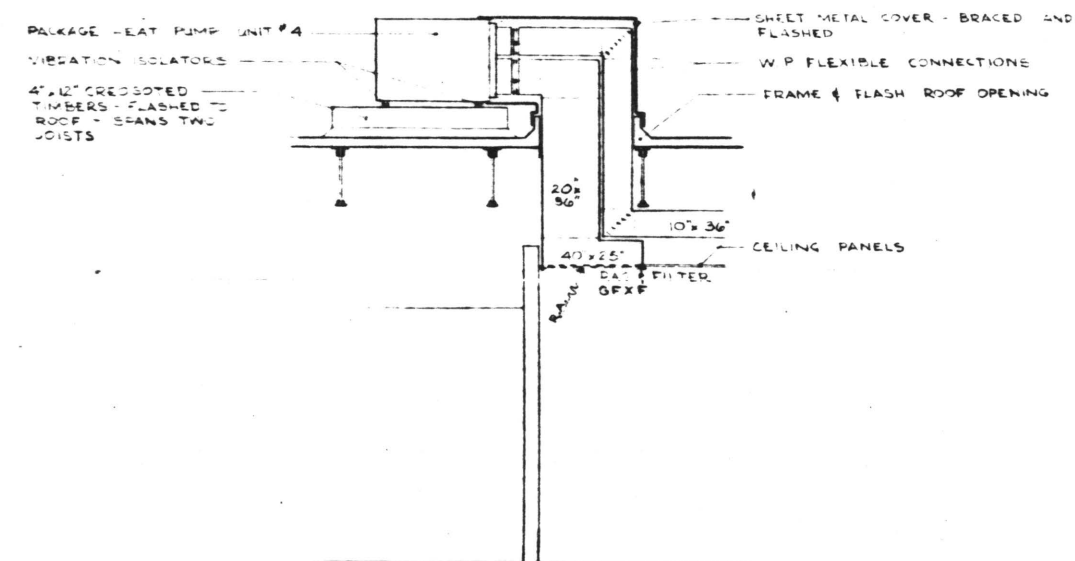
1. ALL INSULATION SHALL BE INTERNAL, EQUAL TO 2" & 6" UFGA-LNCR.
2. LABELS BY RELIABLE METAL PRODUCTS CO., GENEVA, ALABAMA.
3. DUCT SIZES SHOWN ARE NET - ADD FOR INSULATION.
4. RETURN FILTERS AND FILTER GRILLES AS SHOWN.
5. ALL DUCTWORK SHALL BE CONSTRUCTED OF GALVEAS AND DETAILS AS RECOMMENDED IN THE CURRENT EDITION OF THE A.S.H.R.A.E. GUIDE.
6. HEAT PUMP NO. 1. SHALL HAVE ARI RATING: COOLING AT LEAST 120,000 BTU/H, HEATING AT LEAST 120,000 BTU/H. SUPP. HEATER, AT LEAST 13.92 KW - 2 STEP. COMPLETE WITH ALL CONTROLS. PROVIDE EMERGENCY HEAT SWITCH @ 25% MAKE-UP AIR DPR. 2 INK. ROOF FAN MOTOR.
7. HEAT PUMP NO. 2. SHALL HAVE ARI RATING: COOLING AT LEAST 90,000 BTU/H, HEATING AT LEAST 90,000 BTU/H. SUPP. HEATERS AT LEAST 9.92 KW - 2 STEP. COMPLETE WITH ALL CONTROLS. PROVIDE EMERGENCY HEAT SW TO @ 25% MAKE-UP AIR DPR.
8. HEAT PUMP NO. 3. SHALL HAVE ARI RATING: COOLING AT LEAST 90,000 BTU/H, HEATING AT LEAST 90,000 BTU/H. SUPP. HEATERS AT LEAST 9.92 KW - 2 STEP. COMPLETE WITH ALL CONTROLS. PROVIDE EMERGENCY HEAT SWITCH @ 25% MAKE-UP AIR DPR.
9. HEAT PUMP NO. 4. SHALL HAVE ARI RATING: COOLING AT LEAST 48,000 BTU/H, HEATING AT LEAST 48,000 BTU/H. SUPP. HEATERS AT LEAST 4.96 KW. COMPLETE WITH ALL CONTROLS. PROVIDE EMERGENCY HEAT SWITCH.
10. HEAT PUMP CONTRACTOR SHALL BE AN ALABAMA POWER CO. CERTIFIED HEAT PUMP DEALER.
11. HEAT PUMP SHALL BE APPROVED UNDER ALABAMA POWER CO. ASSURED SERVICE PROGRAM.
12. INSTALL HEAT PUMPS ON CROSDOTTED TIMBERS, SIMILAR TO TYPICAL SECTIONS AS SHOWN ON THIS SHEET.
13. THE WEIGHTS OF THE HEAT PUMPS ARE AS FOLLOWS:  
 H.P. #1 - APPROX. 1250#      H.P. #3 - APPROX. 750#  
 H.P. #2 - APPROX. 1150#      H.P. #4 - APPROX. 650#



**FLOOR PLAN**  
SCALE 1/8" = 1'-0"



**SECTION AT HEAT PUMPS #1, #2 & #3**  
DIAGRAMATIC



**SECTION AT HEAT PUMP #4**  
DIAGRAMATIC

<b>ALABAMA POWER COMPANY</b>	
JOB CLANTON DISTRICT OFFICE	
DETAIL HEAT PUMP LAYOUT & DETAILS	
SCALE AS SHOWN	B/M
DRAWN DARYL	CHECKED TRACED
APPROVED <i>D. D. Harts</i>	DATE 23 NOV 73
APPROVED	DATE 31 OCT 73
SHEET 6 OF 7 SHEETS	
SUPERSEDES <b>C-194689</b>	

DRAWN DARYL CHECKED TRACED  
 APPROVED *D. D. Harts* DATE 23 NOV 73  
 APPROVED DATE 31 OCT 73