

BY SIGN CONTRACTOR

1. SHEET METAL COVER - INSTALLED AFTER SIGN IN PLACE - PLASTIC CONDUIT CLIP AT CRIP AT PARAPET

2. 2" X 1/2" TRIM

PLAN SECTION

3. 23 3/4" X 48 5/8" TRANSLUCENT WHITE ACRYLIC PANS, 1/2" THICK, FURNISHED BY ALABAMA POWER COMPANY, INSTALLED BY CONTRACTOR

4. T-2 65 WATT HIGH OUTPUT 42" TUBE, 2' O.C.

5. GALVANIZED ANGLE FRAMEWORK

6. SHEET METAL COVER

7. SHEET METAL COVER

8. TRIM EDGE

9. 1/2" SPACER BLOCKS FOR DRAINAGE & SUPPORT OF PLASTIC FACE

10. WEEP HOLES

11. 2" X 1/2" TRIM FURNISHED BY SIGN CONTRACTOR INSTALLED BY OWNER AFTER CEILING

1/4" SLOPE

1'-2"

4'-11"

10'-0"

WELD - 1" X 1/4" Z 640' O.C. 2" GUT TO FIT (INSTALL AN ADDITIONAL 2" GUT AT APPROX. 2'-0" FROM FACE OF TRIM)

BY OWNER

1. METAL FLASHING
2. JOINT CAULKING
3. ROOF INSULATION, DECKING & FLASHING TO BE INSTALLED BY OWNER

4. MASONRY WALL BEYOND

5. COUNTER FLASHING

6. PRESSURE TREATED 4" X 4" PARAPET

BY SIGN CONTRACTOR
1. 1/2" CORRUGATED SHEET
2. 1/4" BY 1 1/2" HORIZONTAL HANGERS

3. 1/2" BY 1 1/2" HORIZONTAL HANGERS

4. 1/2" BY 1 1/2" HORIZONTAL HANGERS

5. FLOOR LIGHTING & WIRING TROUGH

6. DOTTED INDICATES FINISHING TROUGH & SIGN PROJECTS MORE THAN ONE PANEL (2'-0") FROM BUILDING

CROSS SECTION

INDICATES CONDITION AT SUB-FLOOR PLASTIC - SEE FLOOR PLAN

11'-7" MINIMUM (TO FIN. FL.)

10'-0" (TO FIN. FL.)

CONTINUE ANGLE TO METAL STOREFRONT

SHEET METAL COVER

METAL TRIM

WOOD CEILING

REFLECTED CEILING PLAN

2'-0" OR 4'-0" (SEE BUILDING ELEVATIONS FOR NO. PANELS)

2'-0" TYPICAL (SEE BUILDING ELEVATIONS FOR NUMBER PANELS)

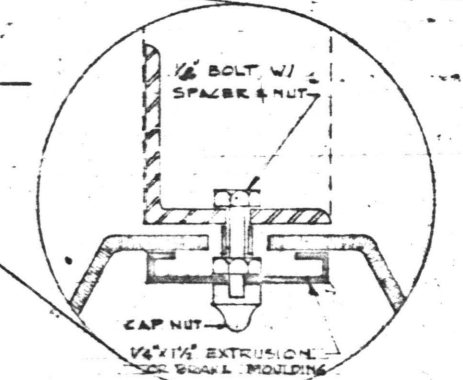
(SEE BUILDING ELEVATIONS FOR NUMBER PANELS)

CROSS SECTION

PLAN SECTION

SCALE: 3" = 1'-0"

NOTE:
THIS SHEET FURNISHED FOR INFORMATION AND GUIDANCE OF OWNER. FASCIA SIGN FURNISHED AND INSTALLED BY OTHERS. FRAMING FOR SUPPORT OF FASCIA SIGN BY OWNER.



FULL SIZE DET. TYPICAL VERTICAL

NOTE:
FOR DETAILS OF 55" HIGH SIGN SEE DWG. NO. FIG9057

ALABAMA POWER COMPANY	
JOB CLANTON DISTRICT OFFICE	
DETAIL STANDARD FASCIA SIGN (49" HIGH)	
SCALE 3" = 1'-0"	B/M
SHEET 7 OF 7 SHEETS	C-194689
SUPERSEDES	

REVISED FOR CLANTON 25 NOV. 75

DRAWN SMITH CHECKED D.L.H. TRACED
APPROVED [Signature] DATE 21 Oct 75
APPROVED DATE