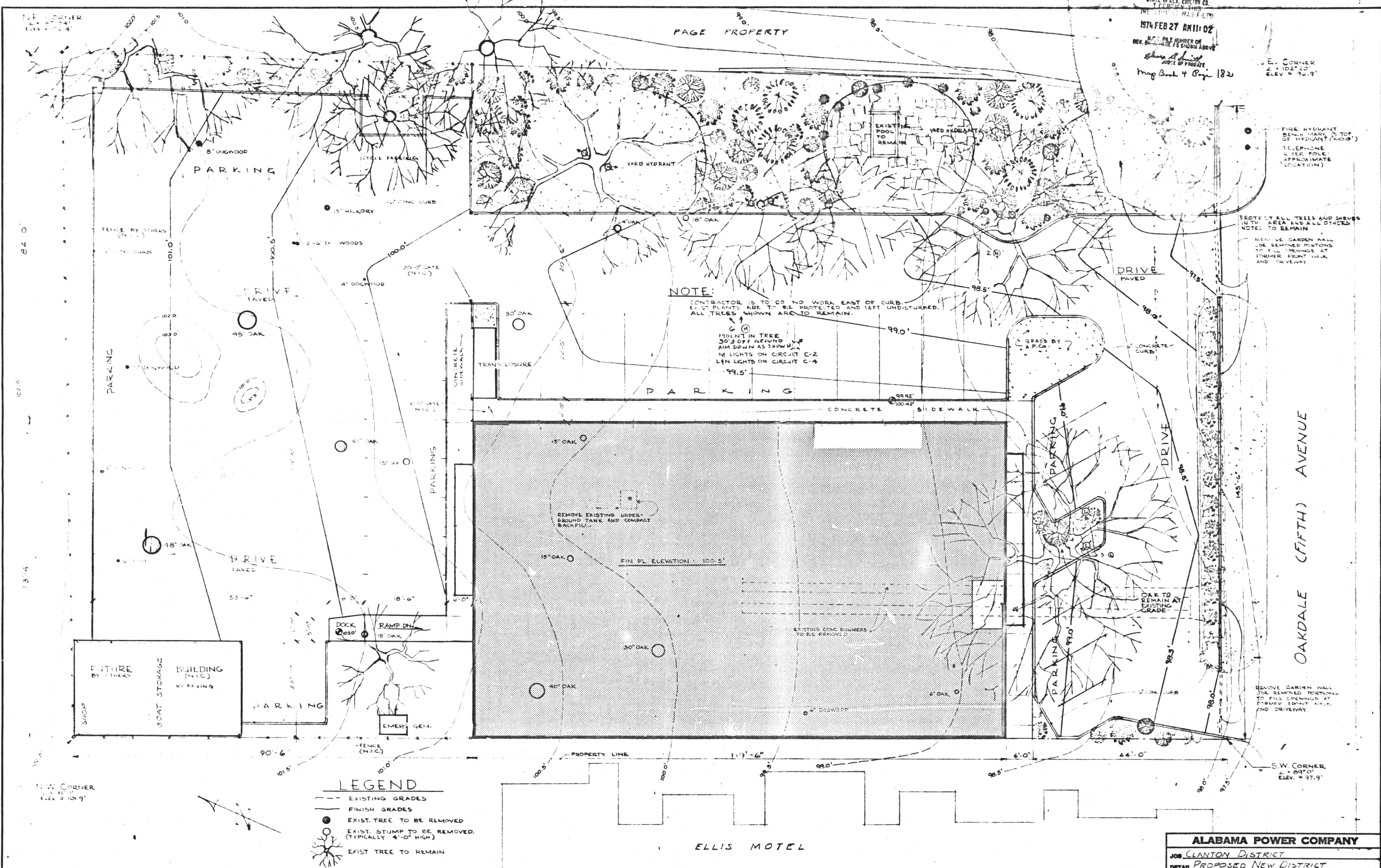


NE CORNER  
2.11.19  
Elev. 102.4

PAGE PROPERTY

STATE OF ALA. CIVIL CO.  
1974 FEB 27 AM 11:02  
FILE NUMBER OF  
REC. BOOK 4 PAGE 182

E. CORNER  
2.102.20  
Elev. 96.9



NOTE:  
CONTRACTOR IS TO DO NO WORK EAST OF CURB.  
EXIST. PLANTS ARE TO BE PROTECTED AND LEFT UNDISTURBED.  
ALL TREES SHOWN ARE TO REMAIN.

10' MOUNT IN TREE  
30' OFF GROUND  
AIM DOWN AS SHOWN  
M LIGHTS ON CIRCUIT C-2  
L/N LIGHTS ON CIRCUIT C-4  
99.5'

- LEGEND**
- EXISTING GRADES
  - FINISH GRADES
  - EXIST. TREE TO BE REMOVED
  - EXIST. STUMP TO BE REMOVED (TYPICALLY 4'-0" HIGH)
  - ⊙ EXIST TREE TO REMAIN

FIRE HYDRANT  
BENCH MARK (TOP  
OF HYDRANT (100.0'))  
TELEPHONE  
4' PER. POLE  
(APPROXIMATE  
LOCATION)

PROTECT ALL TREES AND SHRUBS  
IN THIS AREA AND ALL OTHERS  
NOTED TO REMAIN

REMOVE GARDEN WALL  
USE REMOVED PORTIONS  
TO FILL OPENINGS AT  
FORMER FRONT WALK  
AND DRIVEWAY

REMOVE GARDEN WALL  
USE REMOVED PORTIONS  
TO FILL OPENINGS AT  
FORMER FRONT WALK  
AND DRIVEWAY

OAKDALE (FIFTH) AVENUE

S.W. CORNER  
2.089.0  
Elev. 97.9

N.W. CORNER  
2.11.19  
Elev. 101.9

ELLIS MOTEL

<b>ALABAMA POWER COMPANY</b>			
JOB CLANTON DISTRICT			
DETAIL PROPOSED NEW DISTRICT			
OFFICE BUILDING - SITE PLAN			
SCALE 1" = 10'-0"		B/M	
SHEET 1 OF 7 SHEETS		SUPERSEDES	
C-194689			

DRAWN	CHEKED	TRACED	DATE
APPROVED	DATE	APPROVED	DATE