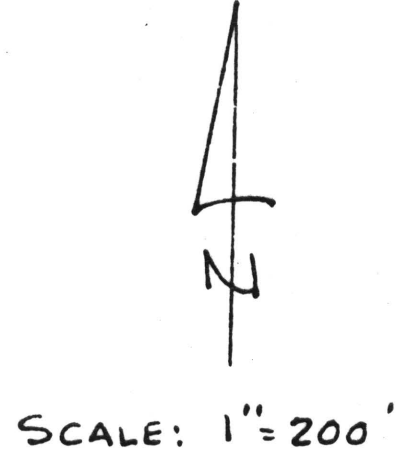
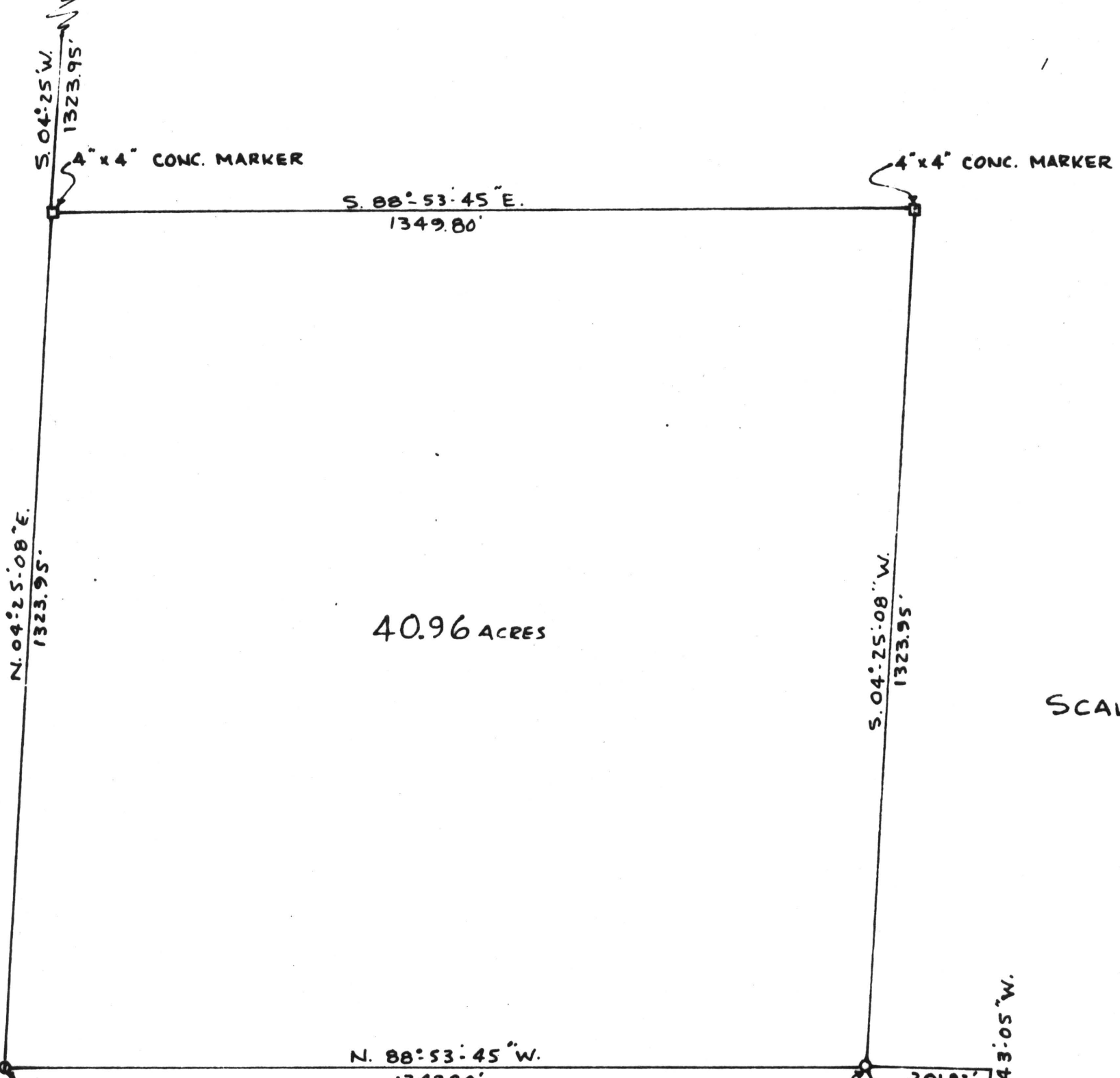
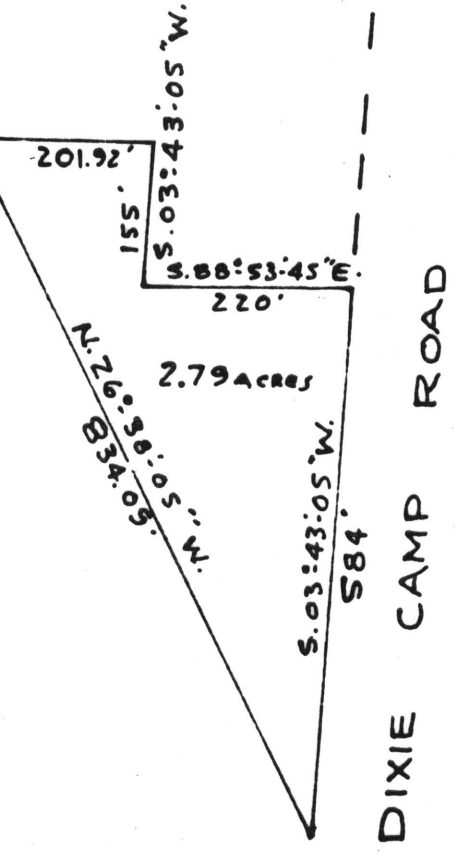


LIGHTWOOD HUB & ROCK PILE
N.W. CORNER S.W. 1/4, SECTION 12
T. 21 N., R. 15 E.



LIGHTWOOD HUB & ROCK PILE
S.W. CORNER, SECTION 12
T. 21 N., R. 15 E.

IRON
PIN



BOUNDARY SURVEY
FOR
H.W. MEDLOCK

SECTIONS 12 & 13, T. 21 N., R. 15 E.
CHILTON COUNTY

STATE OF ALABAMA
I CERTIFY THAT
THIS IS A TRUE AND CORRECT COPY

1981 MAR 25 AM 8 31

U.C.C. FILE NUMBER OR
REC. BK. & PAGE AS SHOWN ABOVE

M.P. Hayden
M.P. HAYDEN

Map Book 5 page 34

M.P. Hayden
M.P. HAYDEN; ALABAMA REG. NO. 12692

3/3/81